

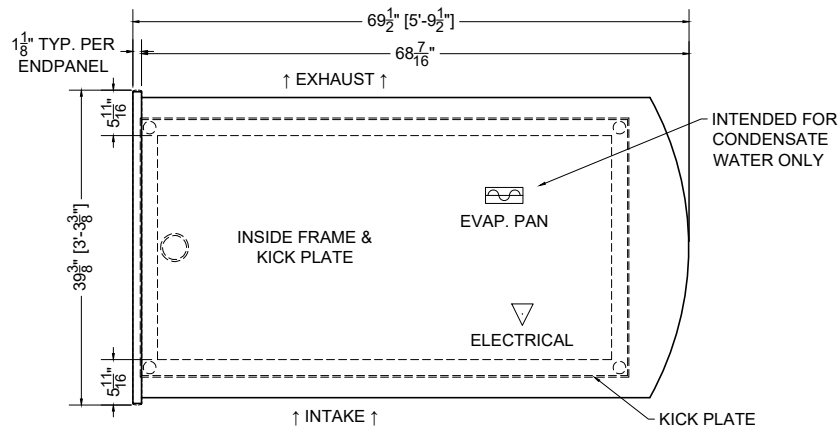
05.6-MDI-3N1PX-S = 4' CENTER + (1) PARTIAL RADIUS END (SELF-CONTAINED)

PLACID

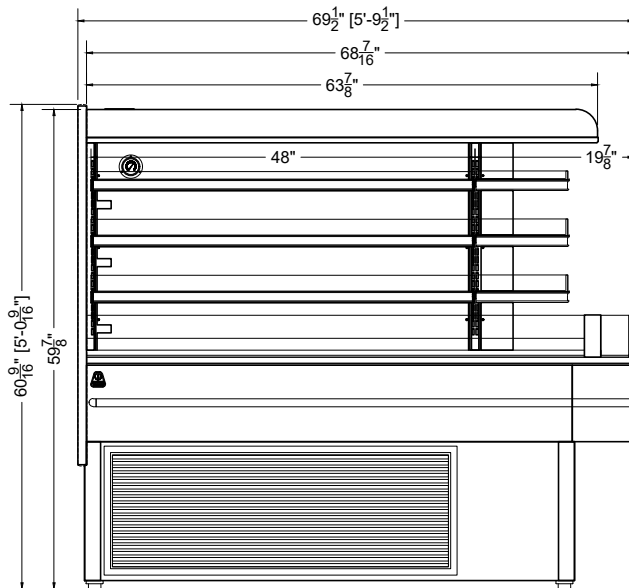
QTY	DESCRIPTION	PART NUMBER	VOLTAGE	PHASE	AMPS	TOTAL AMPS
2	12" LED 3500K, FROSTED, 24V	LG-FX-XXX-X	115V	1	0.02	0.04
3	18" LED 3500K, FROSTED, 24V	LG-FX-XXX-X	115V	1	0.03	0.09
8	45° LED 3500K, FROSTED, 24V	LG-FX-XXX-X	115V	1	0.09	0.72
8	EVAPORATOR FAN	AFXXX	115V	1	0.24	1.92
1	CONDENSING UNIT	RF-CU-0419	208/230V	1	11.70	11.70
1	CONDENSATE EVAP PAN / 1500W / FULL	EL-EV-XXXX	208V	1	7.21	7.21
1	CONDENSATE PUMP	RF-MS-0442	115V	1	2.0	2.00

CIRCUIT#1 TOTAL AMPS:21.68 VOLTAGE:208-230/1/60, 3-WIRE CONNECTION:L14-30P  
 SHIPPING DIMENSIONS: 80" X 48" X 72" PACKOUT VOLUME: 21.65 CUBIC FT.  
 WEIGHT: 1100 INTERNAL VOLUME: 29.08 CUBIC FT.  
 \* OPTIONAL COMPONENT LOAD INCLUDED: EVAP PAN CAN BE REPLACED WITH PUMP

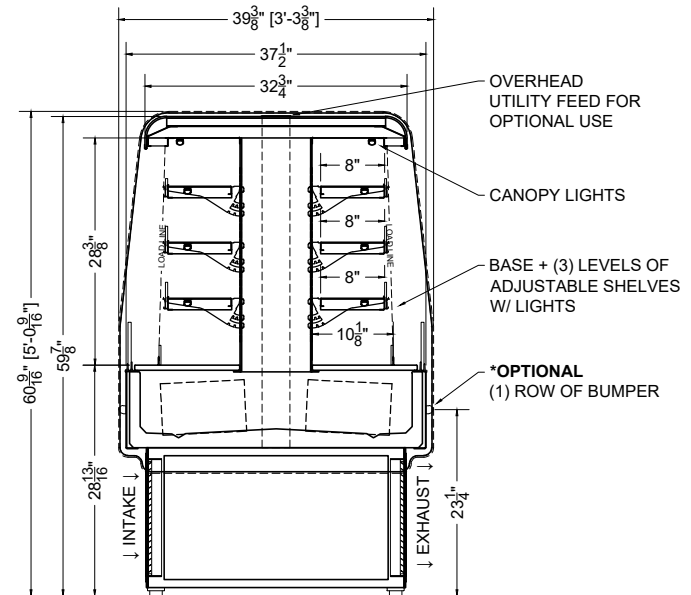
CONFORMS TO UL STD 471.  
 CONFORMS TO NSF STD 7.  
 CERTIFIED TO CAN/CSA STD C22.2 NO. 120.



PLAN MECHANICAL VIEW



SIDE VIEW



SECTION VIEW

