



Cedar
Prep & Display Merchandiser | Cold
PSSC-HS-S



southerncasearts.com | 800.552.6283



OVERVIEW ❄️

The Cedar Prep & Display Case from Southern CaseArts is the perfect addition to your food service area. Available in three lengths, this case provides ample prep space in the rear including refrigerated storage while also providing appealing display area for customers. Meats, cheese, sandwiches and prepared foods have never had it so good.

STANDARD FEATURES

- Nominal Length: 4.0', 6.0' & 8.0'
- Adjustable shelf
- Refrigerated rear storage with adjustable shelf
- LED canopy lights
- Self-contained
- Exterior: Black powder coat

PRODUCT CATEGORIES



Meat



Deli



Cheese/
Dairy



Snacks/
Sandwiches



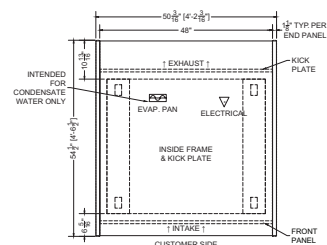
Prepared
Food

04.0-PSSC-HS-S | Cedar Prep & Display Merchandiser

QTY	DESCRIPTION	PART NUMBER	VOLTAGE	PHASE	AMPS	TOTAL AMPS
1	45" LED 3500K, FROSTED, 24V	LG-FX-XXX-X	115V	1	0.09	0.09
2	EVAPORATOR FAN	RF-FA-XXXX	115V	1	0.17	0.34
1	CONDENSING UNIT	RF-CU-0379-A	115V	1	10.35	10.35
1	CONDENSATE EVAP PAN / 500W / HALF	EL-EV-XXXX	115V	1	4.17	4.17

CIRCUIT#1 TOTAL AMPS: 14.95
SHIPPING DIMENSIONS: 62" X 66" X 58"
WEIGHT: 957 LBS.

VOLTAGE: 115/1/60 CONNECTION: L5-30P
PACKOUT VOLUME: 6.43 CUBIC FT.
INTERNAL VOLUME: 9.45 CUBIC FT.
REAR STORAGE: 7.51 CUBIC FT.



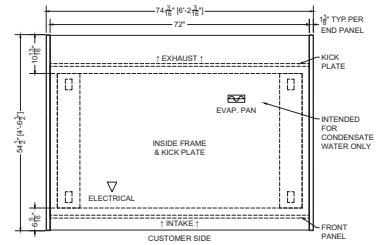
Plan Mechanical View



06.0-PSSC-HS-S | Cedar Prep & Display Merchandiser

QTY	DESCRIPTION	PART NUMBER	VOLTAGE	PHASE	AMPS	TOTAL AMPS
2	34" LED 3500K, FROSTED, 24V	LG-FX-XXX-X	115V	1	0.07	0.14
3	EVAPORATOR FAN	RF-FA-XXXX	115V	1	0.17	0.51
1	CONDENSING UNIT	RF-CU-0417-A	115V	1	14.60	14.60
1	CONDENSATE EVAP PAN / 1200W / FULL	EL-EV-XXXX	115V	1	10.00	10.00

CIRCUIT#1 TOTAL AMPS: 25.25 CONNECTION: L5-30P
 SHIPPING DIMENSIONS: 86" X 66" X 58" PACKOUT VOLUME: 9.64 CUBIC FT.
 WEIGHT: 1185 LBS. INTERNAL VOLUME: 14.17 CUBIC FT.
 REAR STORAGE: 11.39 CUBIC FT.

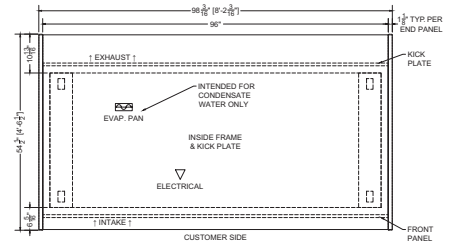


Plan Mechanical View

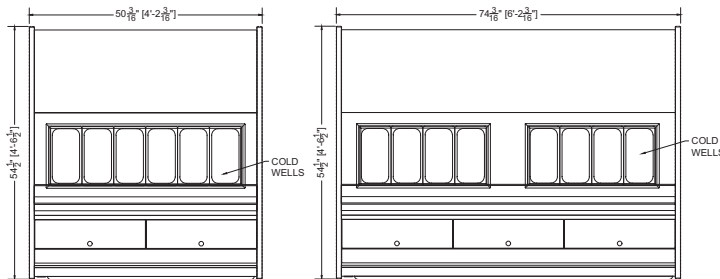
08.0-PSSC-HS-S | Cedar Prep & Display Merchandiser

QTY	DESCRIPTION	PART NUMBER	VOLTAGE	PHASE	AMPS	TOTAL AMPS
2	45" LED 3500K, FROSTED, 24V	LG-FX-XXX-X	115V	1	0.09	0.18
4	EVAPORATOR FAN	RF-FA-XXXX	115V	1	0.17	0.68
1	CONDENSING UNIT	RF-CU-0473-A	115V	1	12.20	12.20
1	CONDENSATE EVAP PAN / 1200W / FULL	EL-EV-XXXX	115V	1	10.00	10.00

CIRCUIT#1 TOTAL AMPS: 23.06 CONNECTION: L5-30P
 SHIPPING DIMENSIONS: 110" X 66" X 58" PACKOUT VOLUME: 12.86 CUBIC FT.
 WEIGHT: 1600 LBS. INTERNAL VOLUME: 18.90 CUBIC FT.
 REAR STORAGE: 15.02 CUBIC FT.

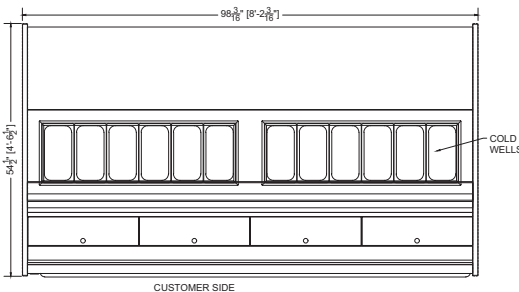


Plan Mechanical View



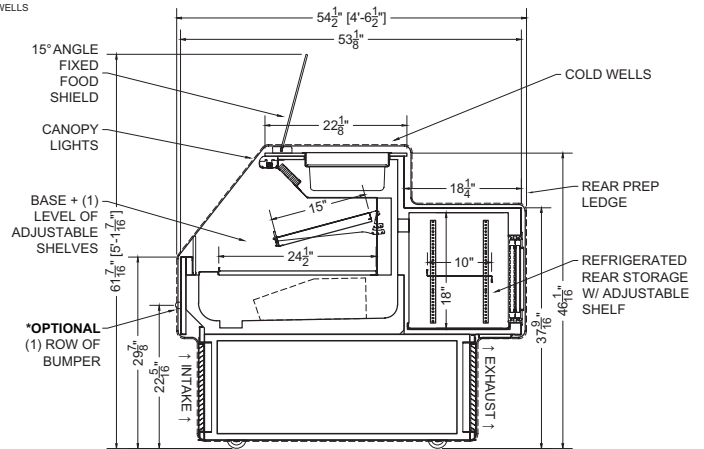
04.0

06.0



08.0

Side View



Section View
for 04.0, 06.0 & 08.0



CONFORMS TO UL STD 471.
 CONFORMS TO NSF STD 7.
 CERTIFIED TO CAN/CSA STD C22.2 NO. 120.

For more information on this Cedar Prep & Display Case, contact one of our Southern CaseArts representatives or check out our website to learn more about all of the products offered by Southern CaseArts.



southerncasearts.com

© 2024 Southern CaseArts. All rights reserved. Information and specifications subject to change without notice. All values are design or typical values when measured under laboratory conditions.