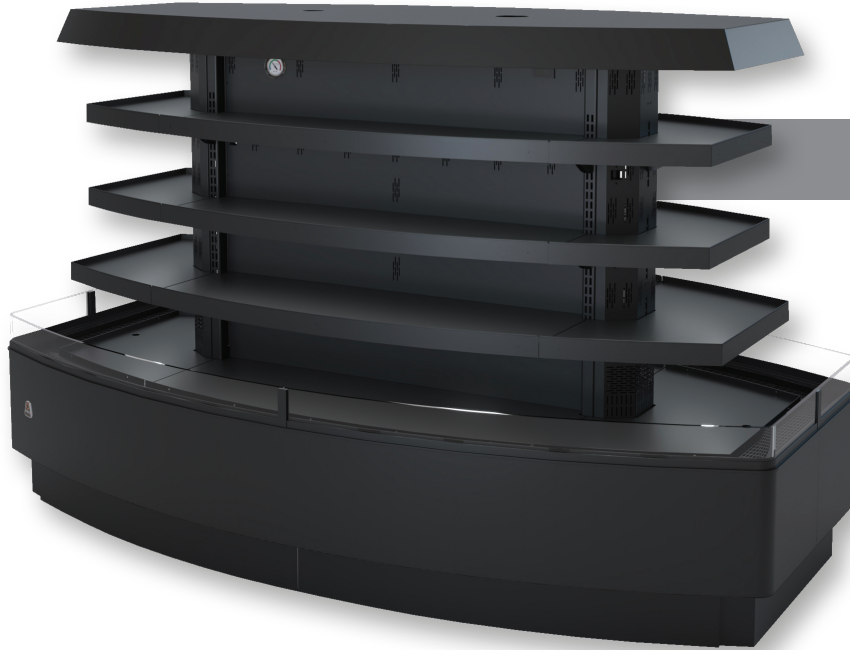




Champlain
Island Merchandiser | Cold
MDI-4T-R



southerncasearts.com | 800.552.6283



OVERVIEW



The **Champlain Refrigerated Island Merchandiser** from **Southern CaseArts** provides a sleek case with 360° access to meats, cheese, snacks, sandwiches, beverages and prepared foods. This case is available in two lengths and features 3 adjustable shelves in varying depths, all include 3500K LED lighting to highlight products. The **Champlain** is a great addition to your store.

STANDARD FEATURES

- **Nominal Length:** 5.9' & 7.8'
- **Shelves:** 3 adjustable shelves with LED lights
- Remote
- LED lighting in canopy
- **Exterior:** Black powder coat

PRODUCT CATEGORIES



Meat



Cheese/
Dairy



Snacks/
Sandwiches



Chilled
Beverages



Prepared
Food

05.9-MDI-4T1-R | Champlain Refrigerated Island Merchandiser

QTY	DESCRIPTION	PART NUMBER	VOLTAGE	PHASE	AMPS	TOTAL AMPS
6	7" LED 3500K, FROSTED, 24V	LG-FX-XXX-X	115V	1	0.01	0.06
5	12" LED 3500K, FROSTED, 24V	LG-FX-XXX-X	115V	1	0.02	0.10
1	18" LED 3500K, FROSTED, 24V	LG-FX-XXX-X	115V	1	0.03	0.03
8	40" LED 3500K, FROSTED, 24V	LG-FX-XXX-X	115V	1	0.08	0.64
10	EVAPORATOR FAN	AFXXX	115V	1	0.24	2.40

CIRCUIT#1 (LIGHTS) **TOTAL AMPS:** 0.83 **VOLTAGE:** 115/1/60 **CONNECTION:** HARDWIRED
 CIRCUIT#2 (FANS) **TOTAL AMPS:** 2.40 **VOLTAGE:** 115/1/60 **CONNECTION:** HARDWIRED
MODEL: MDI-4T1 **APPLICATION:** DELI **BTUH:** 15930 **EVAP TEMP:** 22°F
DEFROST: TIME-OFF, 4/40 MIN, 47° TEMP TERMINATION
SHIPPING DIMENSIONS: 86" X 60" X 70" **PACKOUT VOLUME:** 38.92 CUBIC FT.
WEIGHT: 1116 LBS. **INTERNAL VOLUME:** 56.44 CUBIC FT.



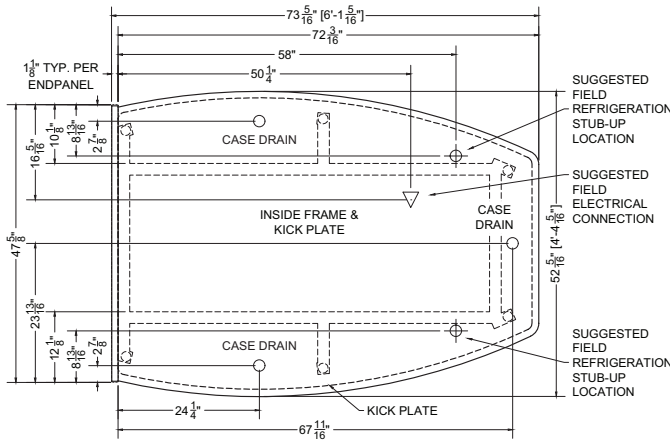


07.8-MDI-4T2-R | Champlain Refrigerated Island Merchandiser

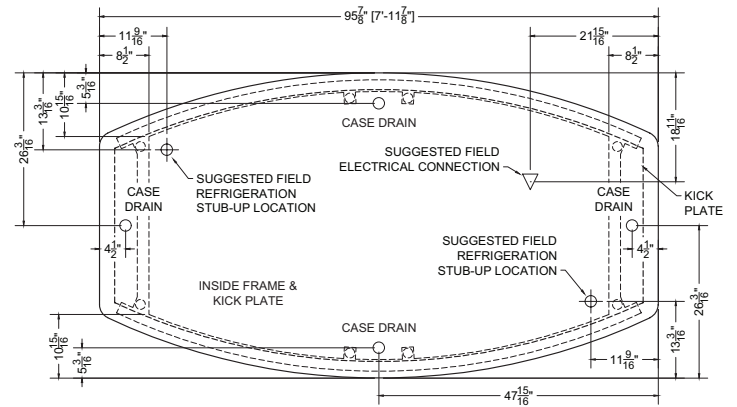
QTY	DESCRIPTION	PART NUMBER	VOLTAGE	PHASE	AMPS	TOTAL AMPS
12	7" LED 3500K, FROSTED, 24V	LG-FX-XXX-X	115V	1	0.01	0.12
10	12" LED 3500K, FROSTED, 24V	LG-FX-XXX-X	115V	1	0.02	0.10
2	18" LED 3500K, FROSTED, 24V	LG-FX-XXX-X	115V	1	0.03	0.03
8	40" LED 3500K, FROSTED, 24V	LG-FX-XXX-X	115V	1	0.08	0.64
12	EVAPORATOR FAN	AFXXX	115V	1	0.24	2.88

CIRCUIT#1 (LIGHTS) TOTAL AMPS: 1.02 VOLTAGE: 115/1/60 CONNECTION: HARDWIRED
 CIRCUIT#2 (FANS) TOTAL AMPS: 2.88 VOLTAGE: 115/1/60 CONNECTION: HARDWIRED
 MODEL: MDI-4T2 APPLICATION: DELI BTUH: 27285 EVAP TEMP: 22°F
 DEFROST: TIME-OFF, 4/40 MIN, 47° TEMP TERMINATION
 SHIPPING DIMENSIONS: 108" X 60" X 72"
 WEIGHT: 1186 LBS.

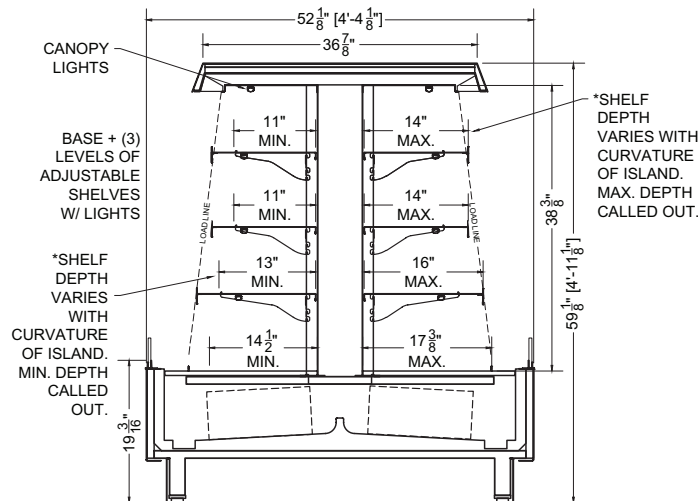
PACKOUT VOLUME: 47.29 CUBIC FT.
 INTERNAL VOLUME: 71.56 CUBIC FT.



Plan Mechanical View
05.9



Plan Mechanical View
07.8



Section View
for 05.9 & 07.8



CONFORMS TO UL STD 471.
 CONFORMS TO NSF STD 7.
 CERTIFIED TO CAN/CSA STD C22.2 NO. 120.

For more information on this Champlain Island Merchandiser, contact one of our Southern CaseArts representatives or check out our website to learn more about all of the products offered by Southern CaseArts.



southerncasearts.com

© 2024 Southern CaseArts. All rights reserved. Information and specifications subject to change without notice. All values are design or typical values when measured under laboratory conditions.