



Cottonwood
Multideck Merchandiser | Cold
CHS-56AN-S

southerncasearts.com | 800.552.6283



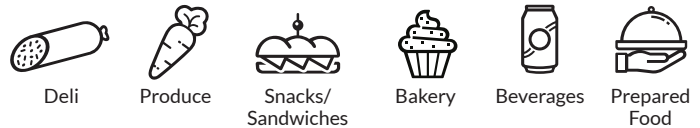
OVERVIEW ❄️

The **Southern CaseArts Cottonwood** multideck merchandiser may be compact but it can put a lot of product at customers fingertips. The versatile **Cottonwood** not only comes in 2ft, 3ft, and 4ft lengths, but also offers multi-temperature options - the upper deck can be used for cold, or ambient temperatures, while the lower deck is refrigerated only. It is perfect for deli items, cheese, bakery, beverages, prepared food and produce. This self-contained unit is available with an option for R290 propane refrigerant which complements it's low energy compressor design for enhanced energy efficiency.

STANDARD FEATURES

- **Nominal Length:** 2.3', 3.1' & 4.1'
- **Shelves:** One adjustable
- **Refrigerant:** R290 propane (optional)
- **Interior Lighting:** LED, 4000K, 24V
- Self-contained
- **Exterior Color:** Black powder coat

PRODUCT CATEGORIES



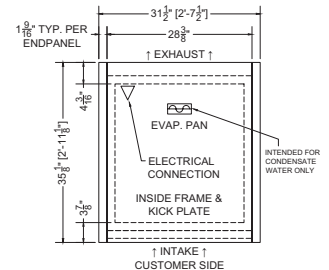
* NOTE: Lower deck is refrigerated only.

02.3-CHS-56AN-S | Cottonwood Spot Merchandiser

QTY	DESCRIPTION	PART NUMBER	VOLTAGE	PHASE	AMPS	TOTAL AMPS
2	24" LED 4000K, 24V	LG-FX-XXX-X	115V	1	0.25	0.50
2	EVAPORATOR FAN	AFXXX	115V	1	0.08	0.16
1	COMPRESSOR	---	115V	1	5.95	5.95
1	CONDENSER COIL FAN MOTOR	---	115V	1	0.20	0.20
1	EVAP PAN	---	115V	1	6.09	6.09

CIRCUIT#1 TOTAL AMPS:12.90 VOLTAGE:115/1/60 CONNECTION: 5-15P
 MODEL: CHS-56AN APPLICATION: DELI BTUH: 3849 EVAP TEMP: 14°F
 DEFROST: TIME-OFF, 4/45MIN, 50° TEMP TERMINATION
 * R290 (PROPANE) REFRIGERATION AVAILABLE

TOP PACKOUT VOLUME: 3.22 CUBIC FT.
 BOTTOM PACKOUT VOLUME: 4.26 CUBIC FT.
 TOP INTERNAL VOLUME: 3.82 CUBIC FT.
 BOTTOM INTERNAL VOLUME: 5.46 CUBIC FT.



Plan Mechanical View

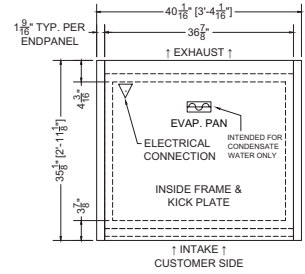


03.1-CHS-56AN-S | Cottonwood Spot Merchandiser

QTY	DESCRIPTION	PART NUMBER	VOLTAGE	PHASE	AMPS	TOTAL AMPS
2	34" LED 4000K, 24V	LG-FX-XXX-X	115V	1	0.38	0.75
2	EVAPORATOR FAN	AFXXX	115V	1	0.08	0.16
1	COMPRESSOR	---	115V	1	5.95	5.95
2	CONDENSER COIL FAN MOTOR	---	115V	1	0.20	0.20
1	EVAP PAN	---	115V	1	6.09	6.09

CIRCUIT#1 TOTAL AMPS:13.15 VOLTAGE:115/1/60 CONNECTION:5-15P
 MODEL: CHS-56AN APPLICATION: DELI BTUH: 4351 EVAP TEMP: 14°F
 DEFROST: TIME-OFF, 4/45MIN, 50° TEMP TERMINATION
 * R290 (PROPANE) REFRIGERATION AVAILABLE

TOP PACKOUT VOLUME: 4.19 CUBIC FT.
 BOTTOM PACKOUT VOLUME: 5.55 CUBIC FT.
 TOP INTERNAL VOLUME: 4.97 CUBIC FT.
 BOTTOM INTERNAL VOLUME: 7.10 CUBIC FT.



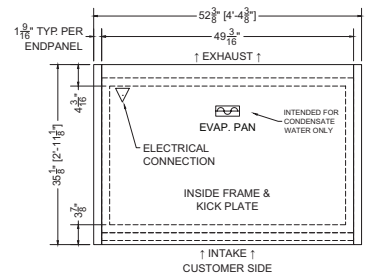
Plan Mechanical View

04.1-CHS-56AN-S | Cottonwood Spot Merchandiser

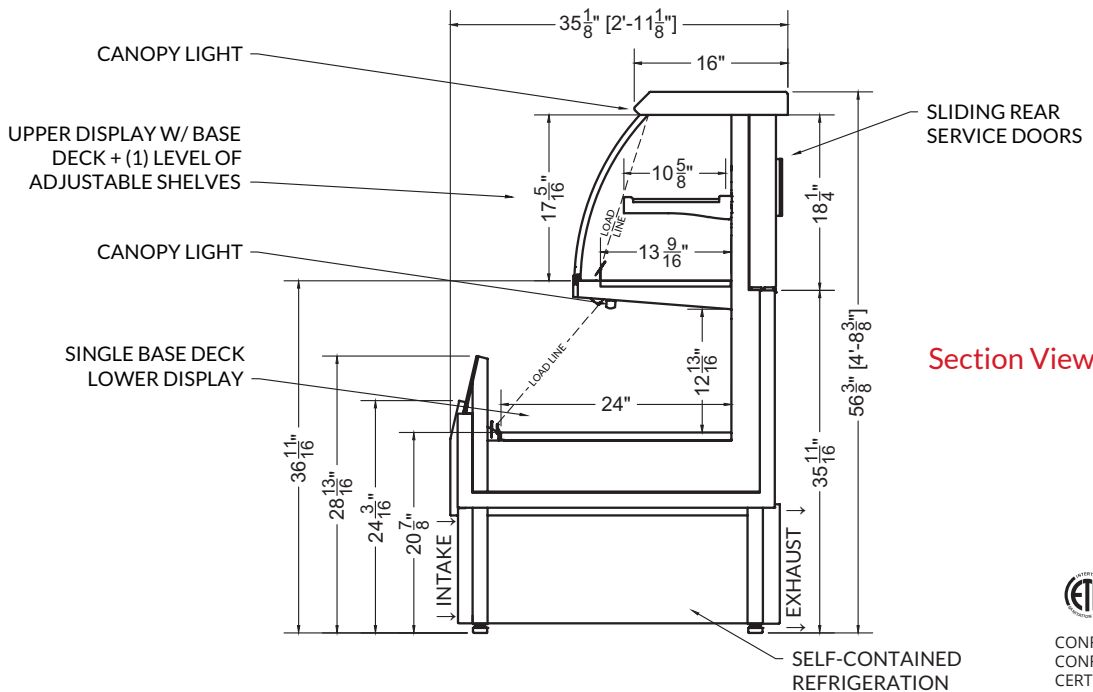
QTY	DESCRIPTION	PART NUMBER	VOLTAGE	PHASE	AMPS	TOTAL AMPS
2	45" LED 4000K, 24V	LG-FX-XXX-X	115V	1	0.50	1.0
3	EVAPORATOR FAN	AFXXX	115V	1	0.08	0.24
1	COMPRESSOR	---	115V	1	6.96	6.96
2	CONDENSER COIL FAN MOTOR	---	115V	1	0.20	0.40
1	EVAP PAN	---	115V	1	6.09	6.09

CIRCUIT#1 TOTAL AMPS:14.69 VOLTAGE:115/1/60 CONNECTION:5-20P
 MODEL: CHS-56AN APPLICATION: DELI BTUH: 5074 EVAP TEMP: 14°F
 DEFROST: TIME-OFF, 4/45MIN, 50° TEMP TERMINATION
 * R290 (PROPANE) REFRIGERATION AVAILABLE

TOP PACKOUT VOLUME: 5.59 CUBIC FT.
 BOTTOM PACKOUT VOLUME: 7.40 CUBIC FT.
 TOP INTERNAL VOLUME: 6.63 CUBIC FT.
 BOTTOM INTERNAL VOLUME: 9.48 CUBIC FT.



Plan Mechanical View



CONFORMS TO UL STD 471.
 CONFORMS TO NSF STD 7.
 CERTIFIED TO CAN/CSA STD C22.2 NO. 120.

For more information on this Cottonwood Multideck Merchandiser, contact one of our Southern CaseArts representatives or check out our website to learn more about all of the products offered by Southern CaseArts.



southerncasearts.com

© 2024 Southern CaseArts. All rights reserved. Information and specifications subject to change without notice. All values are design or typical values when measured under laboratory conditions.