



Grande
Multideck | Hot
MDC-HT02-H & MDC-HT03-H



southerncasearts.com | 800.552.6283



OVERVIEW

The **Grande Heated Multideck Merchandiser** from **Southern CaseArts** is the ideal case to showcase rotisserie chicken and other hot grab-n-go foods. With multiple length options this case is able to fit just about anywhere along walls or in line with other merchandisers. The **Grande** features individual temperature controls for each display level and LED lighting which will draw customers to the merchandiser.

STANDARD FEATURES

- **Nominal Length:** 4.0' & 6.0'
- **Interior Lighting:** LED Lighting
- Individual temperature control for each display level
- Rear load option available
- **Exterior:** Stainless Steel

PRODUCT CATEGORIES



Prepared Food

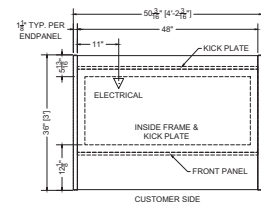


Hot Food

04.0-MDC-HT02-H | Grande Heated Multideck Merchandiser

| QTY | DESCRIPTION | PART NUMBER | VOLTAGE | PHASE | AMPS | TOTAL AMPS | L1 | L2 |
|-----|-----------------------------|--------------|---------|-------|------|------------|------|------|
| 2 | 45" LED 3500K, FROSTED, 24V | LG-FX-XXX-X | 115V | 1 | 0.09 | 0.18 | 0.18 | --- |
| 1 | FOIL HEATER, CANOPY, 4' | FS-HT-0514-A | 208V | 1 | 3.60 | 3.60 | 3.60 | 3.60 |
| 1 | FOIL HEATER, SHELF, 4' | FS-HT-0514-A | 208V | 1 | 3.60 | 3.60 | 3.60 | 3.60 |
| 2 | FOIL HEATER, BASE DECK, 4' | FS-HT-0274-A | 208V | 1 | 2.50 | 5.00 | 5.00 | 5.00 |

CIRCUIT#1 (LOAD CENTER) TOTAL AMPS: (L1=12.38/L2=12.20) VOLTAGE:208/160, 3-WIRE CONNECTION: HARDWIRED INTERNAL VOLUME: 14.54 CUBIC FT.



Plan Mechanical View

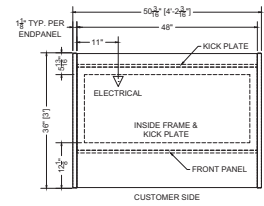




04.0-MDC-HT03-H | Grande Heated Multideck Merchandiser

| QTY | DESCRIPTION | PART NUMBER | VOLTAGE | PHASE | AMPS | TOTAL AMPS | L1 | L2 |
|-----|-----------------------------|--------------|---------|-------|------|------------|------|------|
| 3 | 45" LED 3500K, FROSTED, 24V | LG-FX-XXX-X | 115V | 1 | 0.09 | 0.27 | 0.27 | --- |
| 1 | FOIL HEATER, CANOPY, 4' | FS-HT-0514-A | 208V | 1 | 3.60 | 3.60 | 3.60 | 3.60 |
| 2 | FOIL HEATER, SHELF, 4' | FS-HT-0514-A | 208V | 1 | 3.60 | 7.20 | 7.20 | 7.20 |
| 2 | FOIL HEATER, BASE DECK, 4' | FS-HT-0274-A | 208V | 1 | 2.50 | 5.00 | 5.00 | 5.00 |

CIRCUIT#1 (LOAD CENTER) TOTAL AMPS: (L1=16.07/L2=15.80) VOLTAGE:208/160, 3-WIRE CONNECTION: HARDWIRED
 SHIPPING DIMENSIONS: 62" X 48" X 69" INTERNAL VOLUME: 21.95 CUBIC FT.
 WEIGHT: 790 LBS

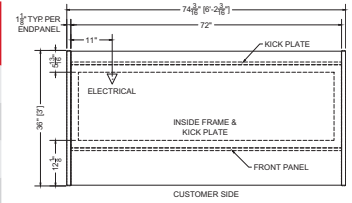


Plan Mechanical View

06.0-MDC-HT02-H | Grande Heated Multideck Merchandiser

| QTY | DESCRIPTION | PART NUMBER | VOLTAGE | PHASE | AMPS | TOTAL AMPS | L1 | L2 |
|-----|-----------------------------|--------------|---------|-------|------|------------|------|------|
| 4 | 34" LED 3500K, FROSTED, 24V | LG-FX-XXX-X | 115V | 1 | 0.07 | 0.28 | 0.28 | --- |
| 1 | FOIL HEATER, CANOPY, 6' | FS-HT-0508-A | 208V | 1 | 5.40 | 5.40 | 5.40 | 5.40 |
| 1 | FOIL HEATER, SHELF, 6' | FS-HT-0508-A | 208V | 1 | 5.40 | 5.40 | 5.40 | 5.40 |
| 2 | FOIL HEATER, BASE DECK, 6' | FS-HT-0364-A | 208V | 1 | 3.80 | 7.60 | 7.60 | 7.60 |

CIRCUIT#1 (LOAD CENTER) TOTAL AMPS: (L1=18.68/L2=18.40) VOLTAGE: 208/160, 3-WIRE CONNECTION: HARDWIRED
 INTERNAL VOLUME: 21.81 CUBIC FT.

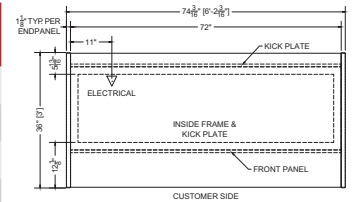


Plan Mechanical View

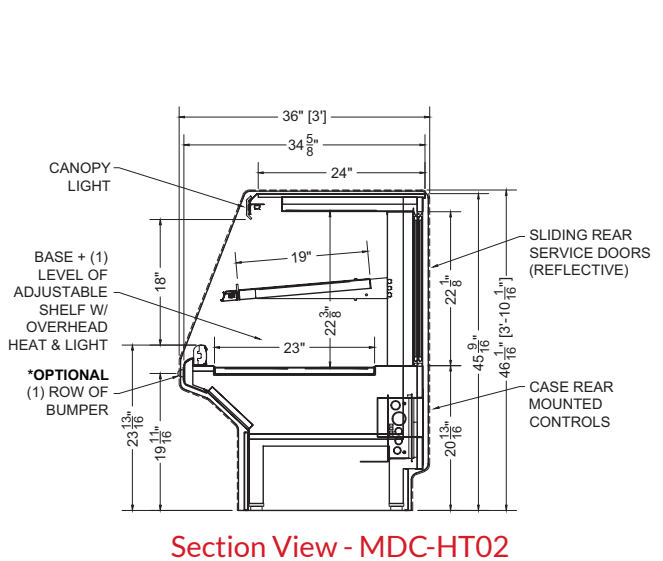
06.0-MDC-HT03-H | Grande Heated Multideck Merchandiser

| QTY | DESCRIPTION | PART NUMBER | VOLTAGE | PHASE | AMPS | TOTAL AMPS | L1 | L2 |
|-----|-----------------------------|--------------|---------|-------|------|------------|-------|-------|
| 3 | 34" LED 3500K, FROSTED, 24V | LG-FX-XXX-X | 115V | 1 | 0.07 | 0.42 | 0.42 | --- |
| 1 | FOIL HEATER, CANOPY, 6' | FS-HT-0508-A | 208V | 1 | 5.40 | 5.40 | 5.40 | 5.40 |
| 2 | FOIL HEATER, SHELF, 6' | FS-HT-0508-A | 208V | 1 | 5.40 | 10.80 | 10.80 | 10.80 |
| 2 | FOIL HEATER, BASE DECK, 6' | FS-HT-0364-A | 208V | 1 | 3.80 | 7.60 | 7.60 | 7.60 |

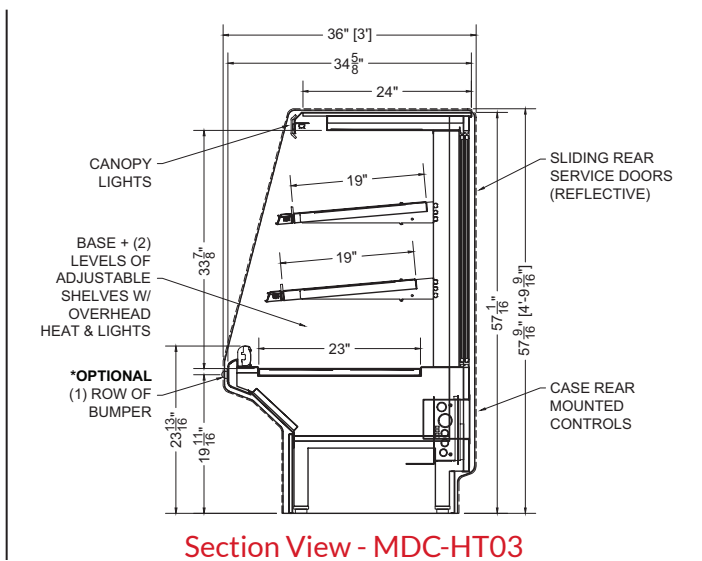
CIRCUIT#1 (LOAD CENTER) TOTAL AMPS: (L1=16.07/L2=15.80) VOLTAGE:208/160, 3-WIRE CONNECTION: HARDWIRED
 SHIPPING DIMENSIONS: 62" X 48" X 69" INTERNAL VOLUME: 32.93 CUBIC FT.
 WEIGHT: 790 LBS



Plan Mechanical View



Section View - MDC-HT02



Section View - MDC-HT03



CONFORMS TO UL STD 197.
 CONFORMS TO NSF STD 4.
 CERTIFIED TO CAN/CSA STD C22.2 NO. 120.

For more information on the Grande Heated Multideck Merchandiser, contact one of our Southern CaseArts representatives or check out our website to learn more about all of the products offered by Southern CaseArts.



southerncasearts.com

© 2024 Southern CaseArts. All rights reserved. Information and specifications subject to change without notice. All values are design or typical values when measured under laboratory conditions.