



Lawrence
Multideck Merchandiser | Cold
MDC-82LVN-S



southerncasearts.com | 800.552.6283



OVERVIEW



The **Lawrence Multideck Merchandiser** from **Southern CaseArts** provides maximum exposure for meats, cheese, snacks & sandwiches, beverages or prepared foods. Available in 3.8ft and 7.8ft models both featuring self-contained refrigeration with a top mounted compressor for added versatility in where this case can be placed. The **Lawrence** has five adjustable shelves to accommodate a variety of items and the LED lighting will showcase those items for your customers.

STANDARD FEATURES

- **Nominal Length:** 3.8' & 7.8'
- **Shelves:** 5 adjustable shelves with LED lights
- Self-contained with top mounted compressor
- Optional night screen
- **Exterior Color:** Black

PRODUCT CATEGORIES



Meat



Cheese/
Dairy



Snacks/
Sandwiches



Chilled
Beverages

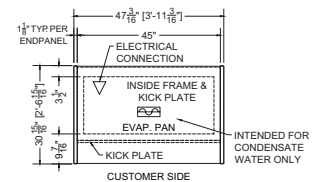


Prepared
Food

03.8-MDC-82LVN-S | Lawrence Multideck Merchandiser

QTY	DESCRIPTION	PART NUMBER	VOLTAGE	PHASE	AMPS	TOTAL AMPS
6	40" LED 3500K, FROSTED, 24V	LG-FX-XXX-X	115V	1	0.08	0.48
2	EVAPORATOR FAN	AFXXX	115V	1	0.24	0.48
1	CONDENSING UNIT	RF-CU-0388-A	208/230V	1	9.80	9.80
1	CONDENSATE EVAP PAN / 1500W / HALF	EL-EV-XXXX	208V	1	7.21	7.21
1	CONDENSATE PUMP	RF-MS-0442	115V	1	2.00	2.00

CIRCUIT#1 **TOTAL AMPS:19.97** **VOLTAGE:208-230/1/160, 3-WIRE** **CONNECTION: L14-30P**
PACKOUT VOLUME: 25.05 CUBIC FT.
INTERNAL VOLUME: 34.37 CUBIC FT.



Plan Mechanical View

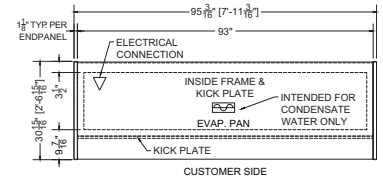




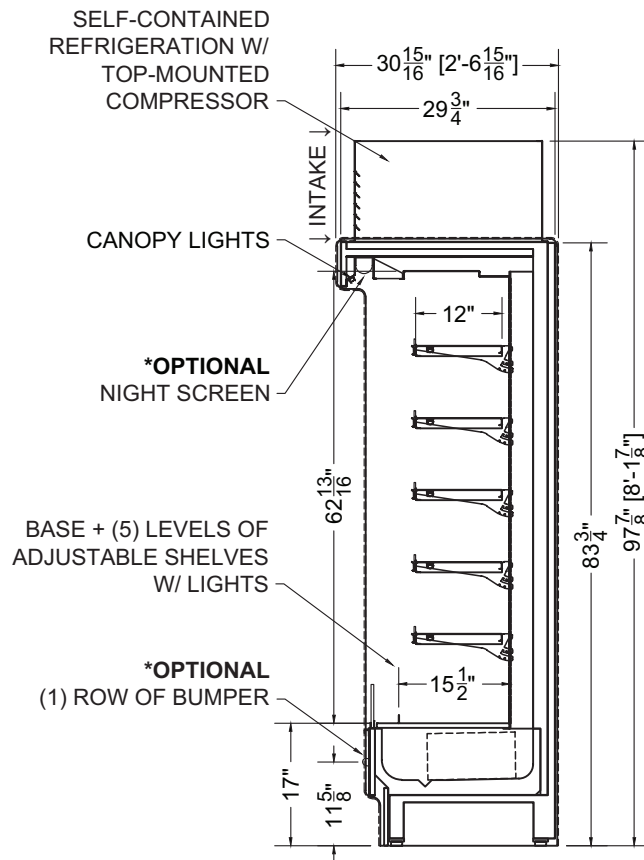
07.8-MDC-82LVN-S | Lawrence Multideck Merchandiser

QTY	DESCRIPTION	PART NUMBER	VOLTAGE	PHASE	AMPS	TOTAL AMPS
12	40" LED 3500K, FROSTED, 24V	LG-FX-XXX-X	115V	1	0.08	0.96
6	EVAPORATOR FAN	AFXXX	115V	1	0.24	1.44
1	CONDENSING UNIT	RF-CU-0455-A	208V	1	10.80	10.80
1	CONDENSATE EVAP PAN / 1500W / FULL	EL-EV-XXXX	208V	1	7.21	7.21
1	CONDENSATE PUMP	RF-MS-0442	115V	1	2.00	2.00

CIRCUIT#1 TOTAL AMPS:22.44 VOLTAGE:208-230/1/160, 3-WIRE CONNECTION: L14-30P
 PACKOUT VOLUME: 51.77 CUBIC FT.
 INTERNAL VOLUME: 71.03 CUBIC FT.



Plan Mechanical View



Section View



CONFORMS TO UL STD 471.
 CONFORMS TO NSF STD 7.
 CERTIFIED TO CAN/CSA STD C22.2 NO. 120.

For more information on the Lawrence Multideck Merchandiser, contact one of our Southern CaseArts representatives or check out our website to learn more about all of the products offered by Southern CaseArts.