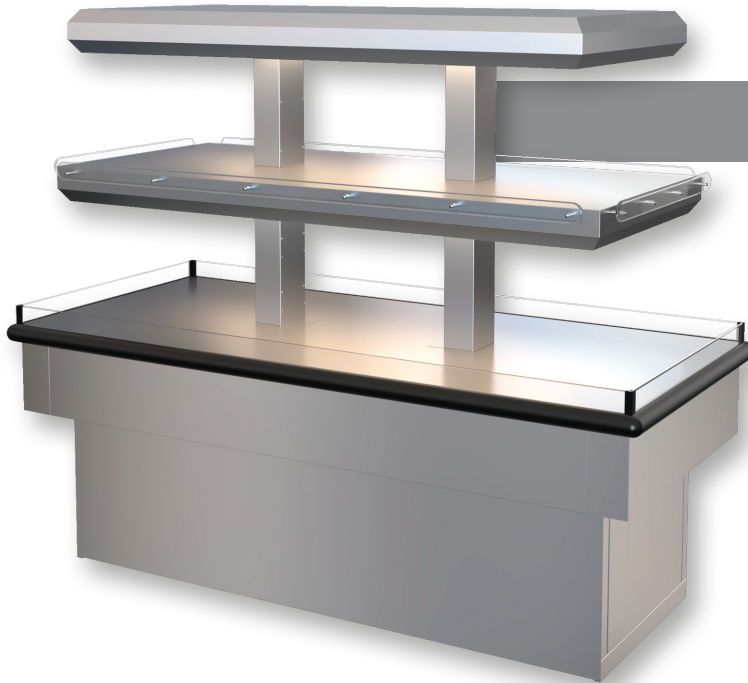




**Powell**  
**Island Merchandiser | Hot**  
**HITT-2SS**



southerncasearts.com | 800.552.6283



**OVERVIEW**

The **Powell Island Merchandiser** from **Southern CaseArts** is the ideal heated case to showcase rotisserie chicken and other hot grab-n-go foods. With two heated tiers this island case provides over 4,000 sq. in. of merchandising space. The **Powell** features LED lighting on each level and provides easy installation and maintenance. It is sure to become a hot spot for your store.

**STANDARD FEATURES**

- **Nominal Length:** 6.0'
- **Interior Lighting:** LED lighting
- Optional overhead utility feed available.
- **Exterior:** Stainless steel

**PRODUCT CATEGORIES**



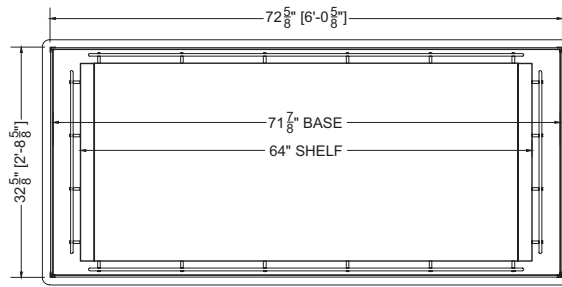
Hot Food

**HITT-2SS | Powell Island Merchandiser**

QTY	DESCRIPTION	PART NUMBER	VOLTAGE	PHASE	AMPS	TOTAL AMPS
8	18" LED 4100K, FROSTED, 24V	LG-FX-XXX-X	120V	1	0.12	0.93
10	OVERHEAD HEAT, CERAMIC	---	208V	1	1.20	12.02
1	SHELF HEAT PAD	---	208V	1	3.65	3.65
1	BASE HEAT PAD	---	208V	1	4.47	4.47

CIRCUIT#1 (LIGHTS) TOTAL AMPS: 21.08 VOLTAGE: 208-230/1/60, 3-WIRE CONNECTION: L14-30P  
 SHIPPING DIMENSIONS: 86" X 44" X 83" SHELF HEATED AREA: 1792 SQ. IN.  
 WEIGHT: 596 LBS. BASE HEATED AREA: 2304 SQ. IN.  
 TOTAL HEATED SURFACE AREA: 4096 SQ. IN.

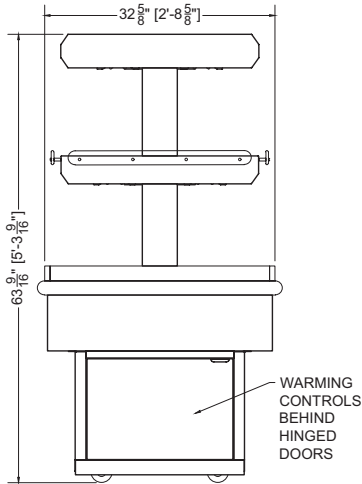




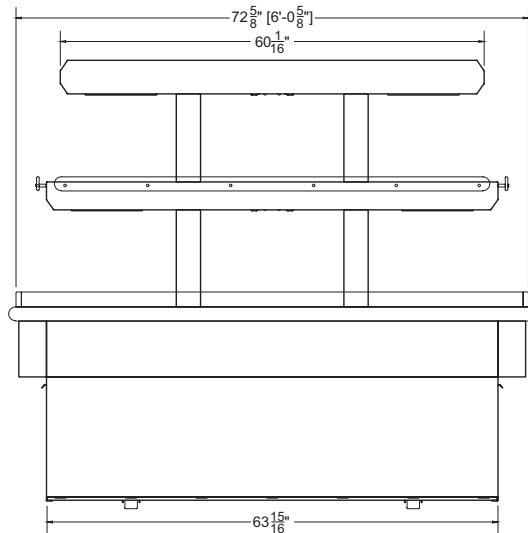
Plan View



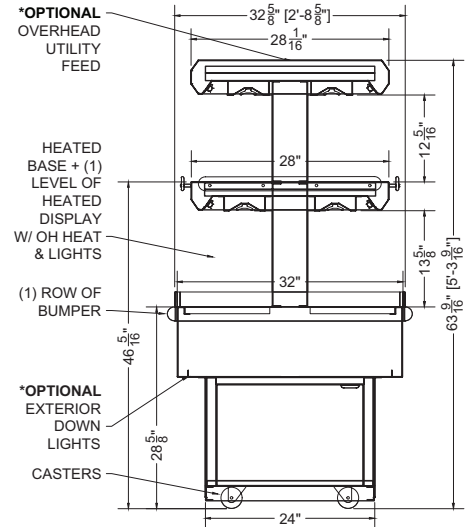
CONFORMS TO UL STD 197.  
 CONFORMS TO NSF STD 4.  
 CERTIFIED TO CAN/CSA STD C22.2 NO. 120.



End View



Side View



Section View

For more information on the Powell Island Merchandiser, contact one of our Southern CaseArts representatives or check out our website to learn more about all of the products offered by Southern CaseArts.