



Spruce
Combination Multideck Merchandiser | Cold & Frozen
04.0-MDC-COM-S

southerncasearts.com | 800.552.6283



OVERVIEW



The **Spruce Dual Temperature Multideck Merchandiser** from **Southern CaseArts** is the perfect addition to your location. At just 4 foot wide with dual temperature capabilities in the lower section and adjustable upper level shelving, this case offers unlimited versatility. The **Spruce** is a self-contained case that will fit just about anywhere and customers will love how convenient it is to find their favorite snacks, sandwiches, prepared & frozen foods and beverages.

PRODUCT CATEGORIES



Deli



Snacks/
Sandwiches



Chilled
Beverages



Frozen Food



Prepared
Food

STANDARD FEATURES

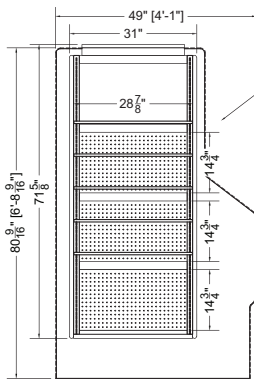
- **Nominal Length:** 4.0'
- **Shelves:** 80COM has 1 adjustable shelf and 92COM features 2 adjustable shelves
- Lower angled wire deck
- LED lighting on upper and lower canopies
- Dual temp (med – frozen) only available in lower section
- Self-contained
- **Exterior:** Black powder coat

04.0-MDC-80COM-S | Spruce Combination Multideck

QTY	DESCRIPTION	PART NUMBER	VOLTAGE	PHASE	AMPS	TOTAL AMPS	L1	L2
3	45" LED 3500K, FROSTED, 24V	LG-FX-XXX-X	115V	1	0.09	0.27	0.27	---
1	EVAPORATOR FAN	RF-FA-XXXX	115V	1	0.17	0.17	0.17	---
3	EVAPORATOR FAN	AFXXX	115V	1	0.24	0.24	0.72	---
1	CONDENSING UNIT	RF-CU-0378-A	208/230V	1	5.75	5.75	5.75	5.75
1	CONDENSING UNIT	RF-CU-0388-A	208/230V	1	9.80	9.80	9.80	9.80
1	CONDENSATE EVAP PAN / 1500W / FULL	EL-EV-XXXX	208V	1	7.21	7.21	7.21	7.21
1	ANTI-CONDENSATE HEATERS	FS-HT-0264	208V	1	3.67	3.67	3.67	3.67
1	HEATED INSULATED GLASS	GL-IN-0053	115V	1	0.14	0.14	0.14	---

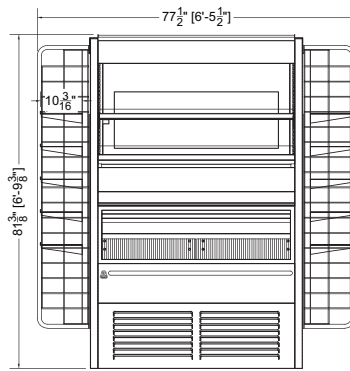
CIRCUIT#1 (LOAD CENTER) **TOTAL AMPS:** (L1=27.73/L2=26.43) **VOLTAGE:** 208/1/160, 3-WIRE **CONNECTION:** HARDWIRED
TOP PACKOUT VOLUME: 11.02 CUBIC FT.
BOTTOM PACKOUT VOLUME: 9.46 CUBIC FT.
TOP INTERNAL VOLUME: 16.19 CUBIC FT.
BOTTOM INTERNAL VOLUME: 16.46 CUBIC FT.



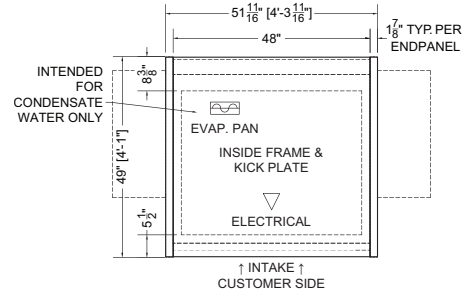


Side View
W/Saddlebags

*OPTIONAL
SADDLE BAG
DISPLAY W/
PEG BOARD &
(10) LEVELS OF
ADJUSTABLE
SHELVES
[(5) PER SIDE]



Front View
W/Saddlebags



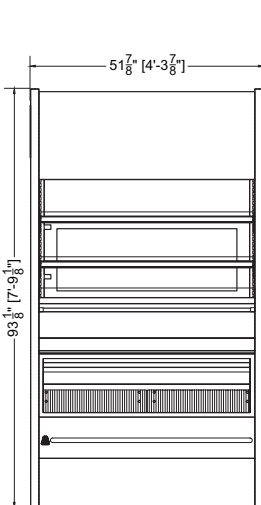
Plan Mechanical View
W/Saddlebags

Saddlebag
version only
available in
the 80COM-S
version

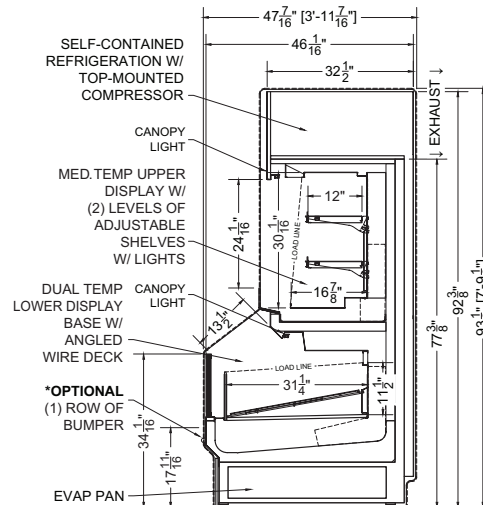
04.0-MDC-92COM-S | Spruce Combination Multideck

QTY	DESCRIPTION	PART NUMBER	VOLTAGE	PHASE	AMPS	TOTAL AMPS	L1	L2
3	45" LED 3500K, FROSTED, 24V	LG-FX-XXX-X	115V	1	0.09	0.36	0.36	---
1	EVAPORATOR FAN	RF-FA-XXXX	115V	1	0.17	0.17	0.17	---
3	EVAPORATOR FAN	AFXXX	115V	1	0.24	0.72	0.72	---
1	CONDENSING UNIT	RF-CU-0378-A	208/230V	1	5.75	5.75	5.75	5.75
1	CONDENSING UNIT	RF-CU-0388-A	208/230V	1	9.80	9.80	9.80	9.80
1	CONDENSATE EVAP PAN / 1500W / FULL	EL-EV-XXXX	208V	1	7.21	7.21	7.21	7.21
1	ANTI-CONDENSATE HEATERS	FS-HT-0264	208V	1	3.67	3.67	3.67	3.67
1	HEATED INSULATED GLASS	GL-IN-0053	115V	1	0.14	0.14	0.14	---

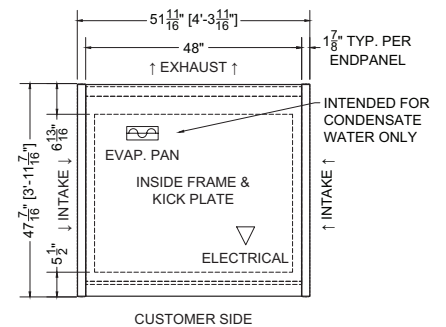
CIRCUIT#1 (LOAD CENTER) TOTAL AMPS: (L1=27.82/L2=26.43) VOLTAGE: 208/1/160, 3-WIRE CONNECTION: HARDWIRED
 TOP PACKOUT VOLUME: 12.77 CUBIC FT.
 BOTTOM PACKOUT VOLUME: 9.46 CUBIC FT.
 TOP INTERNAL VOLUME: 18.76 CUBIC FT.
 BOTTOM INTERNAL VOLUME: 16.46 CUBIC FT.



Front View



Section View



Plan Mechanical View



CONFORMS TO UL STD 471.
 CONFORMS TO NSF STD 7.
 CERTIFIED TO CAN/CSA STD
 C22.2 NO. 120.

For more information on the Spruce Combination Multideck Merchandiser, contact one of our Southern CaseArts representatives or check out our website to learn more about all of the products offered by Southern CaseArts.



southerncasearts.com

© 2024 Southern CaseArts. All rights reserved. Information and specifications subject to change without notice.
 All values are design or typical values when measured under laboratory conditions.