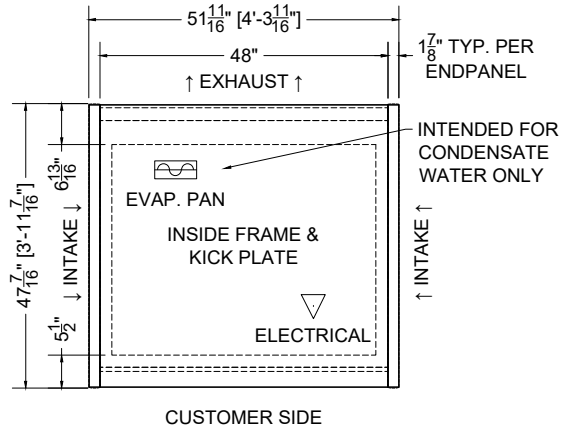


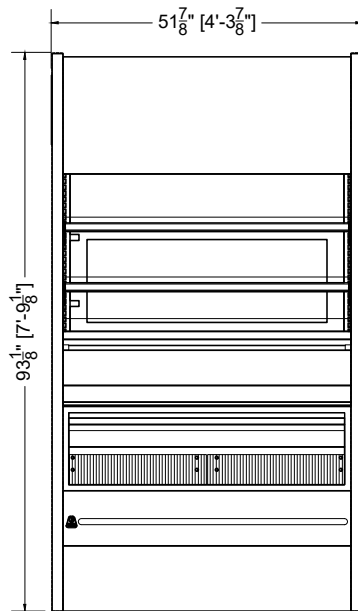
QTY	DESCRIPTION	PART NUMBER	VOLTAGE	PHASE	AMPS	TOTAL AMPS	L1	L2
4	45° LED 3500K, FROSTED, 24V	LG-FX-XXX-X	115V	1	0.09	0.36	0.36	---
1	EVAPORATOR FAN	RF-FA-XXXX	115V	1	0.17	0.17	0.17	---
3	EVAPORATOR FAN	AFXXX	115V	1	0.24	0.72	0.72	---
1	CONDENSING UNIT	RF-CU-0378-A	208/230V	1	5.75	5.75	5.75	5.75
1	CONDENSING UNIT	RF-CU-0388-A	208/230V	1	9.80	9.80	9.80	9.80
1	CONDENSATE EVAP PAN / 1500W / FULL	EL-EV-XXXX	208V	1	7.21	7.21	7.21	7.21
1	ANTI-CONDENSATE HEATERS	FS-HT-0264	208V	1	3.67	3.67	3.67	3.67
1	HEATED INSULATED GLASS	GL-IN-0053	115V	1	0.14	0.14	0.14	---

CIRCUIT#1 (LOAD CENTER) TOTAL AMPS: (L1 = 27.82 / L2 = 26.43) VOLTAGE: 208/1/60, 3-WIRE CONNECTION: HARDWIRED  
 TOP PACKOUT VOLUME: 12.77 CUBIC FT.  
 BOTTOM PACKOUT VOLUME: 9.46 CUBIC FT.  
 TOP INTERNAL VOLUME: 18.76 CUBIC FT.  
 BOTTOM INTERNAL VOLUME: 16.46 CUBIC FT.

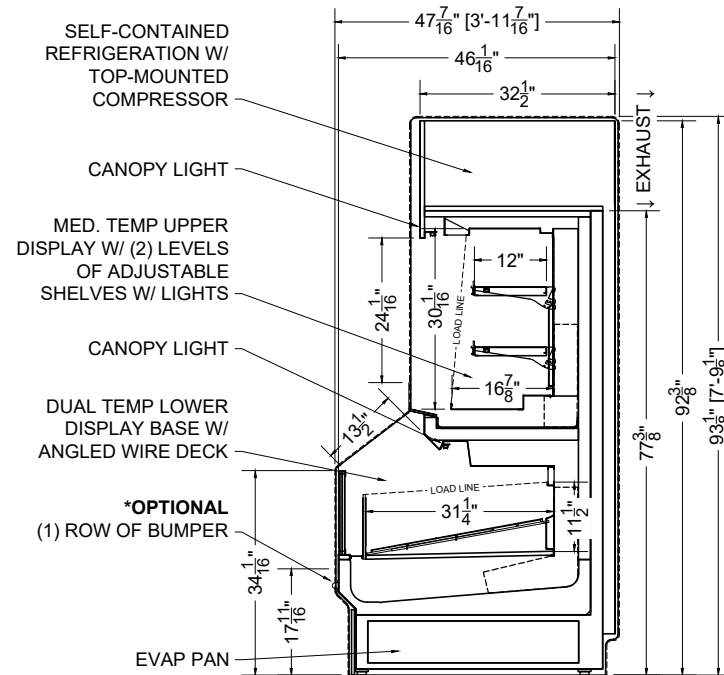
CONFORMS TO UL STD 471.  
 CONFORMS TO NSF STD 7.  
 CERTIFIED TO CAN/CSA STD C22.2 NO. 120.



PLAN MECHANICAL VIEW



FRONT VIEW



SECTION VIEW

