

PLAN MECHANICAL VIEW

04.0-MDC-HT03-H (REAR CONTROLS)

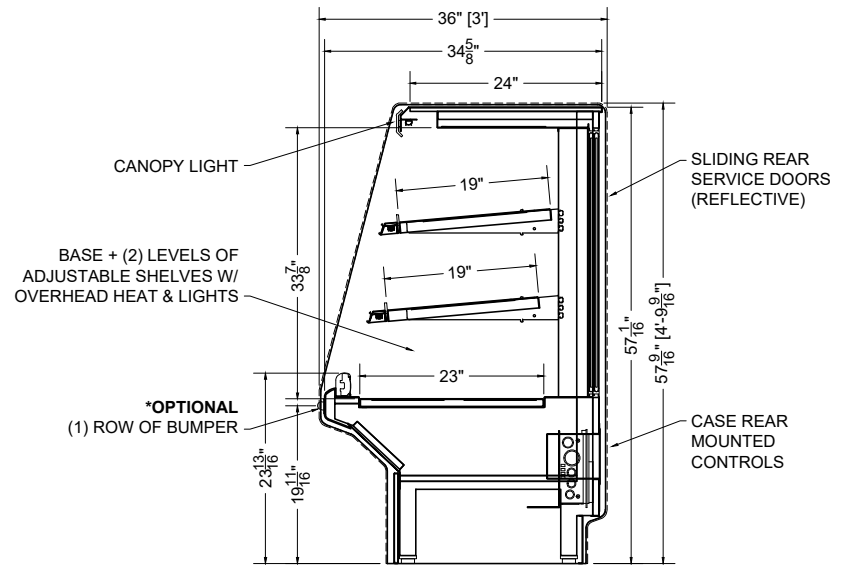
								<i>GRANDE</i>	
QTY	DESCRIPTION	PART NUMBER	VOLTAGE	PHASE	AMPS	TOTAL AMPS	L1	L2	
3	45° LED 3500K, FROSTED, 24V	LG-FX-XXX-X	115V	1	0.09	0.27	0.27	---	
1	FOIL HEATER, CANOPY, 4"	FS-HT-0514-A	208V	1	3.60	3.60	3.60	3.60	
2	FOIL HEATER, SHELF, 4"	FS-HT-0514-A	208V	1	3.60	7.20	7.20	7.20	
2	FOIL HEATER, BASE DECK, 4"	FS-HT-0274-A	208V	1	2.50	5.00	5.00	5.00	

CIRCUIT#1 (LOAD CENTER) TOTAL AMPS: (L1 = 16.07 / L2 = 15.80) VOLTAGE: 208/1/60, 3-WIRE CONNECTION: HARDWIRED  
 SHIPPING DIMENSIONS: 62" X 48" X 69" INTERNAL VOLUME: 21.95 CUBIC FT.  
 WEIGHT: 790 LBS

CONFORMS TO UL STD 197.  
 CONFORMS TO NSF STD 4.  
 CERTIFIED TO CAN/CSA STD C22.2 NO. 120.



IMPORTANT NOTE:  
 CUSTOMER TO SET CONTROLLERS IN STORE BASED ON OPTIMUM PRODUCT TEMPERATURE AND STORE ENVIRONMENT



SECTION VIEW

