

REFRIGERATED WELL CAPACITY:  
 (6) 1/3-SIZE STANDARD PANS 4" DEPTH

\*FOOD PAN INCLUSION **OPTIONAL**

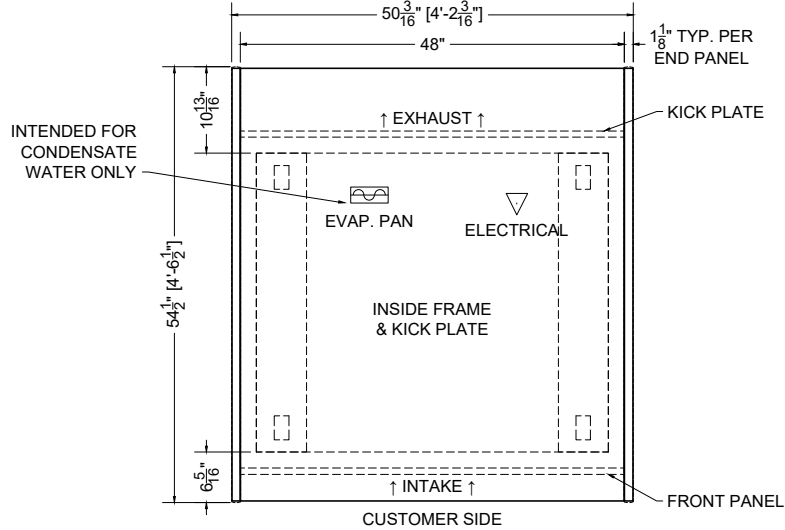
04.0-PSSC-HS-S (WITH CASTERS, SELF-CONTAINED)

CEDAR

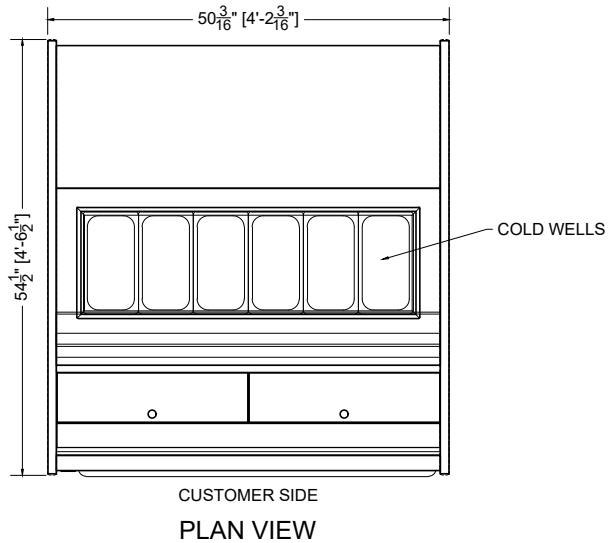
QTY	DESCRIPTION	PART NUMBER	VOLTAGE	PHASE	AMPS	TOTAL AMPS
1	45" LED 3500K, FROSTED, 24V	LG-FX-XXX-X	115V	1	0.09	0.09
2	EVAPORATOR FAN	RF-FA-XXXX	115V	1	0.17	0.34
1	CONDENSING UNIT	RF-CU-0379-A	115V	1	10.35	10.35
1	CONDENSATE EVAP PAN / 500W / HALF	EL-EV-XXXX	115V	1	4.17	4.17

CIRCUIT#1 TOTAL AMPS: 14.95 VOLTAGE: 115V/60 CONNECTION: L5-30P  
 SHIPPING DIMENSIONS: 62" X 66" X 58" PACKOUT VOLUME: 6.43 CUBIC FT.  
 WEIGHT: 957 LBS INTERNAL VOLUME: 9.45 CUBIC FT.  
 REAR STORAGE: 7.51 CUBIC FT.

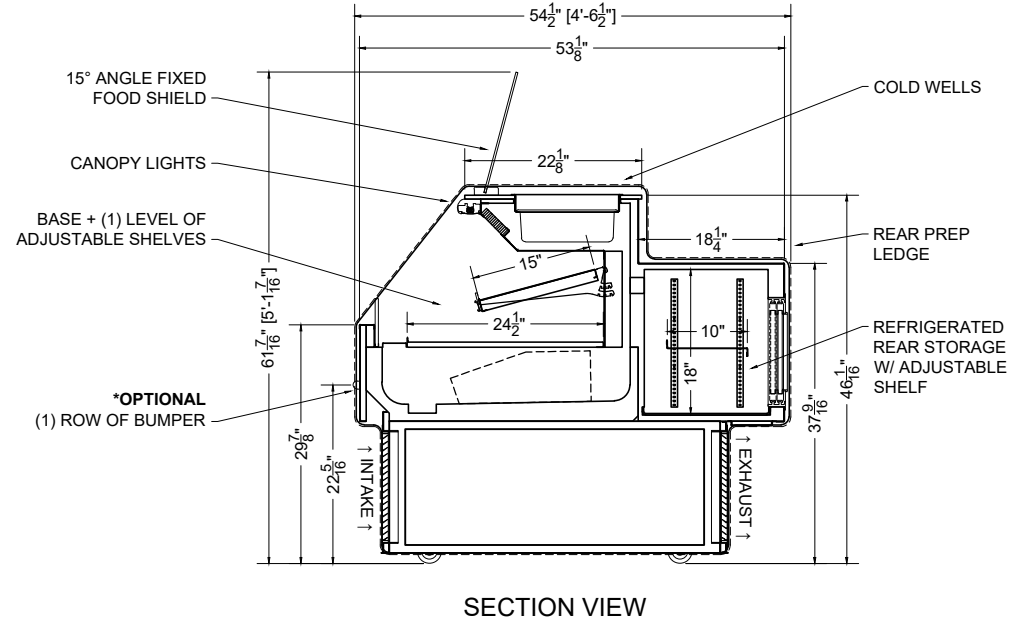
CONFORMS TO UL STD 471.  
 CONFORMS TO NSF STD 7.  
 CERTIFIED TO CAN/CSA STD  
 C22.2 NO. 120.



PLAN MECHANICAL VIEW



CUSTOMER SIDE  
 PLAN VIEW



SECTION VIEW

