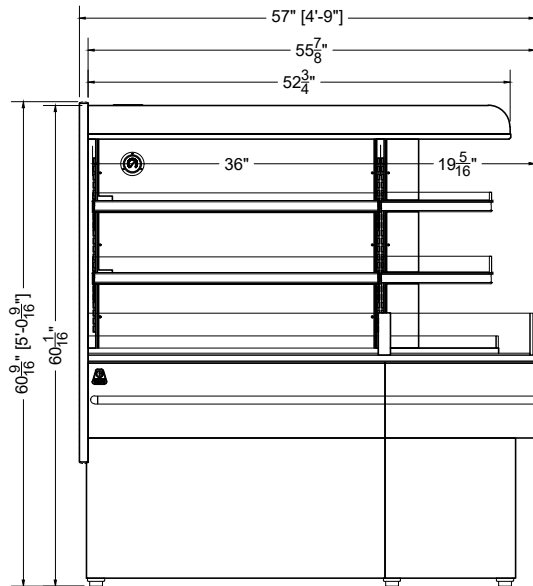


PLAN MECHANICAL VIEW



SIDE VIEW

04.5-MDI-3N1F-R = 3' CENTER + (1) FULL-RADIUS END

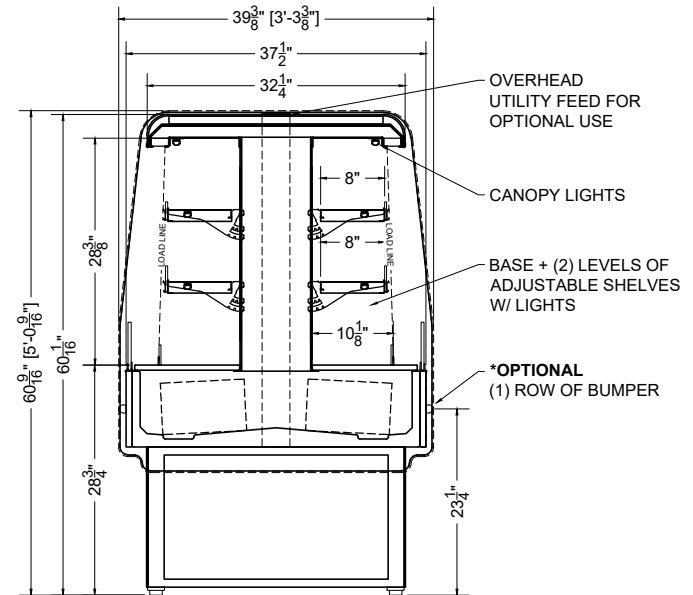
PLACID

QTY	DESCRIPTION	PART NUMBER	VOLTAGE	PHASE	AMPS	TOTAL AMPS
4	12" LED 3500K, FROSTED, 24V	LG-FX-XXX-X	115V	1	0.02	0.08
6	34" LED 3500K, FROSTED, 24V	LG-FX-XXX-X	115V	1	0.07	0.42
6	EVAPORATOR FAN	AFXXX	115V	1	0.24	1.44

CIRCUIT#1 (LIGHTS) TOTAL AMPS:0.50 VOLTAGE:115/1/60 CONNECTION:HARDWIRED
 CIRCUIT#2 (FANS) TOTAL AMPS:1.44 VOLTAGE:115/1/60 CONNECTION:HARDWIRED
 MODEL:MDI-3N APPLICATION:DELI BTUH:6200 EVAP TEMP: 20°F
 DEFROST: TIME-OFF, 4/40MIN, 47° TEMP TERMINATION
 SHIPPING DIMENSIONS: 68" X 48" X 72"
 WEIGHT: 720 LBS

PACKOUT VOLUME: 16.42 CUBIC FT.
 INTERNAL VOLUME: 22.82 CUBIC FT.

CONFORMS TO UL STD 471.
 CONFORMS TO NSF STD 7.
 CERTIFIED TO CAN/CSA STD C22.2 NO. 120.



SECTION VIEW

