

PLAN MECHANICAL VIEW

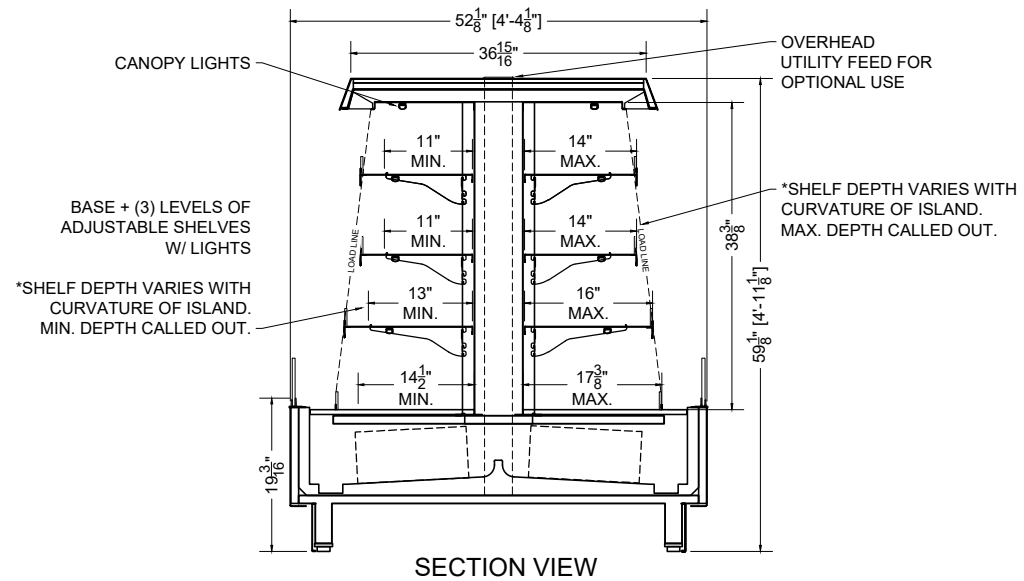
07.8-MDI-4T2-R

CHAMPLAIN

QTY	DESCRIPTION	PART NUMBER	VOLTAGE	PHASE	AMPS	TOTAL AMPS
12	7" LED 3500K, FROSTED, 24V	LG-FX-XXX-X	115V	1	0.01	0.12
10	12" LED 3500K, FROSTED, 24V	LG-FX-XXX-X	115V	1	0.02	0.20
2	18" LED 3500K, FROSTED, 24V	LG-FX-XXX-X	115V	1	0.03	0.06
8	40" LED 3500K, FROSTED, 24V	LG-FX-XXX-X	115V	1	0.08	0.64
12	EVAPORATOR FAN	AFXXX	115V	1	0.24	2.88

CIRCUIT#1 (LIGHTS) TOTAL AMPS: 1.02 VOLTAGE: 115V/1/60 CONNECTION: HARDWIRED
 CIRCUIT#2 (FANS) TOTAL AMPS: 2.88 VOLTAGE: 115V/1/60 CONNECTION: HARDWIRED
 MODEL: MDI-4T2 APPLICATION: DELI BTUH: 27285 CONNECTION: HARDWIRED
 DEFROST: TIME-OFF, 4/40MIN, 47°F TEMP TERMINATION EVAP TEMP: 22°F
 SHIPPING DIMENSIONS: 108" X 60" X 72" PACKOUT VOLUME: 47.29 CUBIC FT.
 WEIGHT: 1186 LBS INTERNAL VOLUME: 71.56 CUBIC FT.

CONFORMS TO UL STD 471
 CONFORMS TO NSF STD 7
 CERTIFIED TO CAN/CSA STD
 C22.2 NO. 120.



PROJ SPECIFICATION SHEET

Desc 07.8-MDI-4T2-R Multi-Deck Island

Name AME Dwg# 038455 Rev #05- 05/14/24

CONFIDENTIAL DOCUMENT: THIS DRAWING IS CONFIDENTIAL AND THE PROPERTY OF SOUTHERN CASEARTS, INC AND IS NOT TO BE REPRODUCED OR EXCHANGED WITH ANY OTHER PERSON OR COMPANY WITHOUT THE EXPRESS WRITTEN CONSENT OF SOUTHERN CASEARTS, INC.

COPYRIGHT ©2023 SOUTHERN CASEARTS, INC. ALL RIGHTS RESERVED

1/2" = 1'

DRAWING DETAILS SUBJECT TO CHANGE DURING THE ENGINEERING PROCESS



SOUTHERN CaseArts