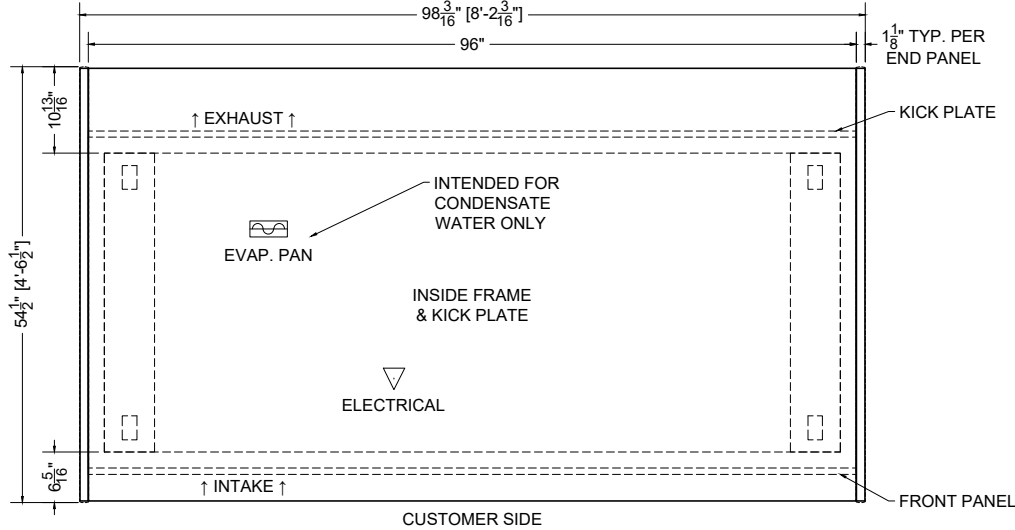
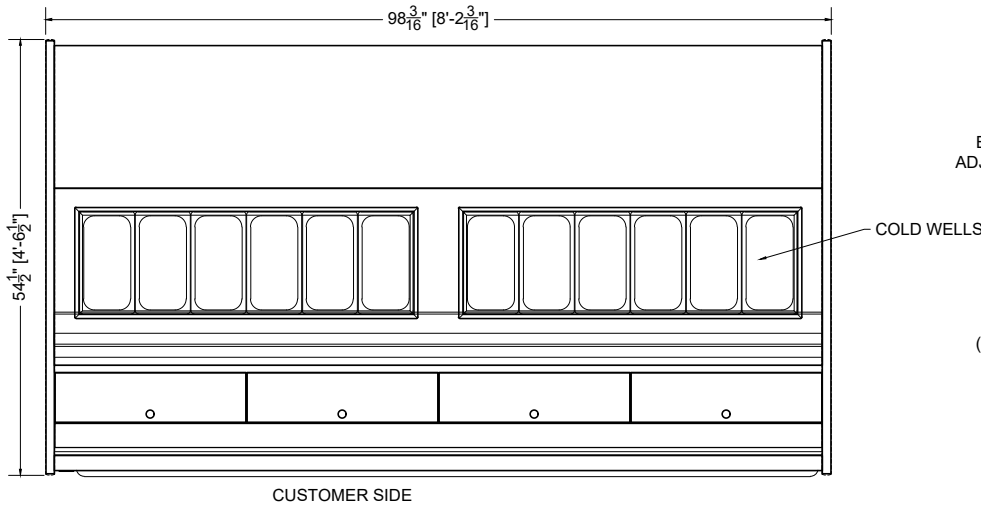


REFRIGERATED WELL CAPACITY:
(12) 1/3-SIZE STANDARD PANS 4" DEPTH

*FOOD PAN INCLUSION **OPTIONAL**



PLAN MECHANICAL VIEW



PLAN VIEW

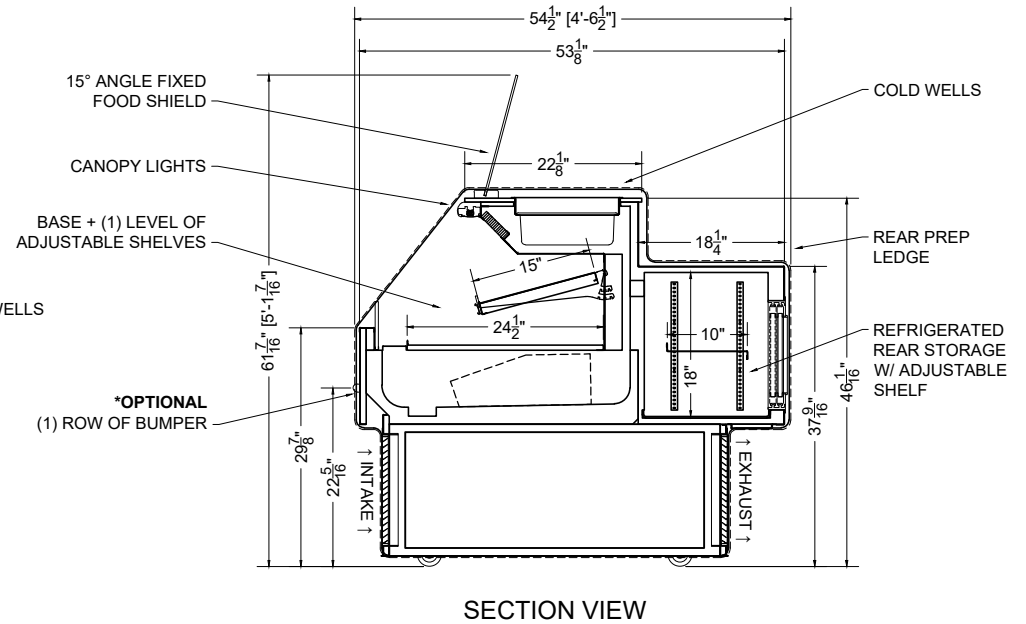
08.0-PSSC-HS-S (WITH CASTERS, SELF-CONTAINED)

CEDAR

| QTY | DESCRIPTION | PART NUMBER | VOLTAGE | PHASE | AMPS | TOTAL AMPS |
|-----|------------------------------------|--------------|---------|-------|-------|------------|
| 2 | 45° LED 3500K, FROSTED, 24V | LG-FX-XXX-X | 115V | 1 | 0.09 | 0.18 |
| 4 | EVAPORATOR FAN | RF-FA-XXXX | 115V | 1 | 0.17 | 0.68 |
| 1 | CONDENSING UNIT | RF-CU-0473-A | 115V | 1 | 12.20 | 12.20 |
| 1 | CONDENSATE EVAP PAN / 1200W / FULL | EL-EV-XXXX | 115V | 1 | 10.00 | 10.00 |

CIRCUIT#1 TOTAL AMPS: 23.06 VOLTAGE: 115V/60 CONNECTION: L5-30P
 SHIPPING DIMENSIONS: 110" X 66" X 58" PACKOUT VOLUME: 12.86 CUBIC FT.
 WEIGHT: 1600 LBS INTERNAL VOLUME: 18.90 CUBIC FT.
 REAR STORAGE: 15.02 CUBIC FT.

CONFORMS TO UL STD 471.
 CONFORMS TO NSF STD 7.
 CERTIFIED TO CAN/CSA STD
 C22.2 NO. 120.



SECTION VIEW

