



Chestnut Deli Combination Merchandiser | Cold CVT-BWD-R



southerncasearts.com | 800.552.6283

OVERVIEW



The Chestnut Deli Combination Merchandiser from Southern CaseArts is sure to become a reliable favorite in your store. Available in two lengths, this case provides energy efficiency and maximum merchandising opportunities. The Chestnut features LED canopy lighting, full view tempered glass, and reflective sliding rear doors. The front of the case offers a merchandise area with an adjustable shelf, perfect for packaged deli salads. With options such as additional shelves and a scale stand ledge this case will keep customers and employees happy.



STANDARD FEATURES

- **Nominal Length:** 8.0' & 12.0'
- **Interior Lighting:** 3500K LED lights
- **Shelving:** Adjustable with LED lights
- Remote
- **Exterior:** Tempered glass, black powder coat and stainless steel

PRODUCT CATEGORIES



Meat



Deli



Cheese/
Dairy



Snacks/
Sandwiches



Beverages



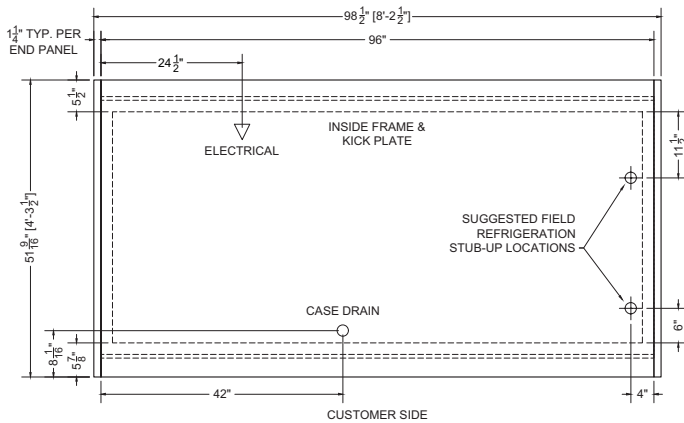
Prepared
Food

08.0-CVT-BWD-R | Chestnut Deli Combination Merchandiser

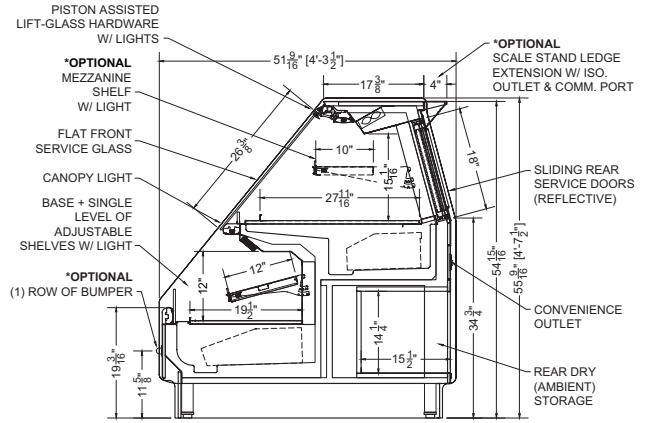
QTY	DESCRIPTION	PART NUMBER	VOLTAGE	PHASE	AMPS	TOTAL AMPS
10	45" LED 3500K, FROSTED, 24V	LG-FX-XXX-X	115V	1	0.09	0.90
4	EVAPORATOR FAN	RF-FA-XXXX	115V	1	0.17	0.68
5	EVAPORATOR FAN	AFXXX	115V	1	0.24	1.20
2	AIR SWEEP FAN	AFXXX	115V	1	0.24	0.48

CIRCUIT#1 (LIGHTS)	TOTAL AMPS: 0.90	VOLTAGE: 115/1/60	CONNECTION: HARDWIRED
CIRCUIT#2 (FANS)	TOTAL AMPS: 2.36	VOLTAGE: 115/1/60	CONNECTION: HARDWIRED
CIRCUIT#3 (CONV. OUTLET)	TOTAL AMPS: 20.00	VOLTAGE: 115/1/60	CONNECTION: HARDWIRED
CIRCUIT#4 (ISO. OUTLET)	TOTAL AMPS: 20.00	VOLTAGE: 115/1/60	CONNECTION: HARDWIRED
MODEL: CVT-BWD (DOME)	APPLICATION: DELI	BTUH: 2800	EVAP TEMP: 22°F
DEFROST: TIME-OFF, 4/40 MIN, 47° TEMP TERMINATION			
MODEL: CVT-BWD (BASE)	APPLICATION: DELI	BTUH: 4000	EVAP TEMP: 24°F
DEFROST: TIME-OFF, 4/40 MIN, 47° TEMP TERMINATION		*OPTIONAL COMPONENT LOAD INCLUDED	





Plan Mechanical View

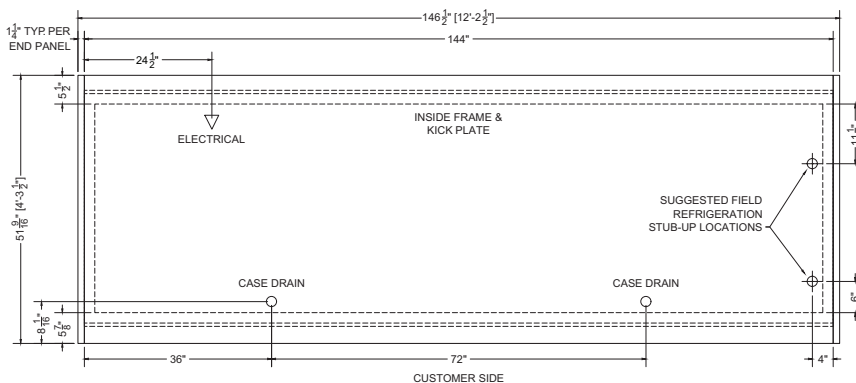


Section View

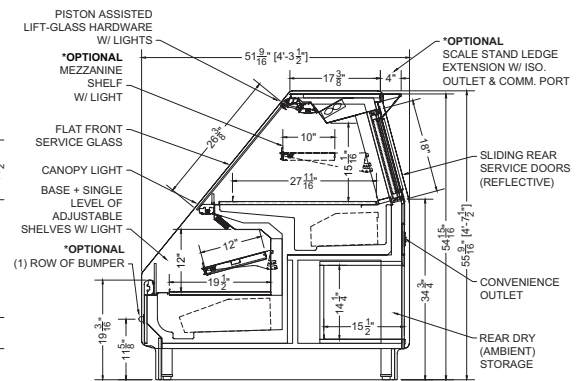
12.0-CVT-BWD-R | Chestnut Deli Combination Merchandiser

QTY	DESCRIPTION	PART NUMBER	VOLTAGE	PHASE	AMPS	TOTAL AMPS
15	45" LED 3500K, FROSTED, 24V	LG-FX-XXX-X	115V	1	0.09	1.35
5	EVAPORATOR FAN	RF-FA-XXXX	115V	1	0.17	0.85
8	EVAPORATOR FAN	AFXXX	115V	1	0.24	1.92
3	AIR SWEEP FAN	AFXXX	115V	1	0.24	0.72

CIRCUIT#1 (LIGHTS) TOTAL AMPS: 1.35 VOLTAGE: 115/1/60 CONNECTION: HARDWIRED
 CIRCUIT#2 (FANS) TOTAL AMPS: 3.49 VOLTAGE: 115/1/60 CONNECTION: HARDWIRED
 CIRCUIT#3 (CONV. OUTLET) TOTAL AMPS: 20.00 VOLTAGE: 115/1/60 CONNECTION: HARDWIRED
 CIRCUIT#4 (ISO. OUTLET) TOTAL AMPS: 20.00 VOLTAGE: 115/1/60 CONNECTION: HARDWIRED
 MODEL: CVT-BWD (DOME) APPLICATION: DELI BTUH: 4200 EVAP TEMP: 22°F
 DEFROST: TIME-OFF, 4/40 MIN, 47° TEMP TERMINATION
 MODEL: CVT-BWD (BASE) APPLICATION: DELI BTUH: 6000 EVAP TEMP: 24°F
 DEFROST: TIME-OFF, 4/40 MIN, 47° TEMP TERMINATION * OPTIONAL COMPONENT LOAD INCLUDED



Plan Mechanical View



Section View



CONFORMS TO UL STD 471.
 CONFORMS TO NSF STD 7.
 CERTIFIED TO CAN/CSA STD C22.2 NO. 120.

For more information on the Chestnut Deli Combination Merchandiser, contact one of our Southern CaseArts representatives or check out our website to learn more about all of the products offered by Southern CaseArts.



southerncasearts.com

© 2024 Southern CaseArts. All rights reserved. Information and specifications subject to change without notice. All values are design or typical values when measured under laboratory conditions.