



**Mystic**  
Combination Freezer | Frozen  
MDD-81TSCF-S



southerncasearts.com | 800.552.6283



**OVERVIEW**

The **Mystic Combination Freezer** from **Southern CaseArts** is a versatile addition to your frozen food area. Available in three lengths, this unique case offers both swing door access and sliding door access in a single freezer. The top features glass swing doors, two adjustable wire shelves and vertical display LED lighting. The bottom of this self-contained freezer has a single glass front bunker with sliding flat glass doors for easy customer access to frozen foods and ice cream.

**STANDARD FEATURES**

- **Nominal Length:** 4.1', 6.2' & 8.2'
- **Interior Lighting:** 4000K LED lights
- **Shelving:** 2 adjustable wire shelves
- Self-contained
- **Exterior:** Glass and black powder coat

**PRODUCT CATEGORIES**



Frozen



Ice Cream



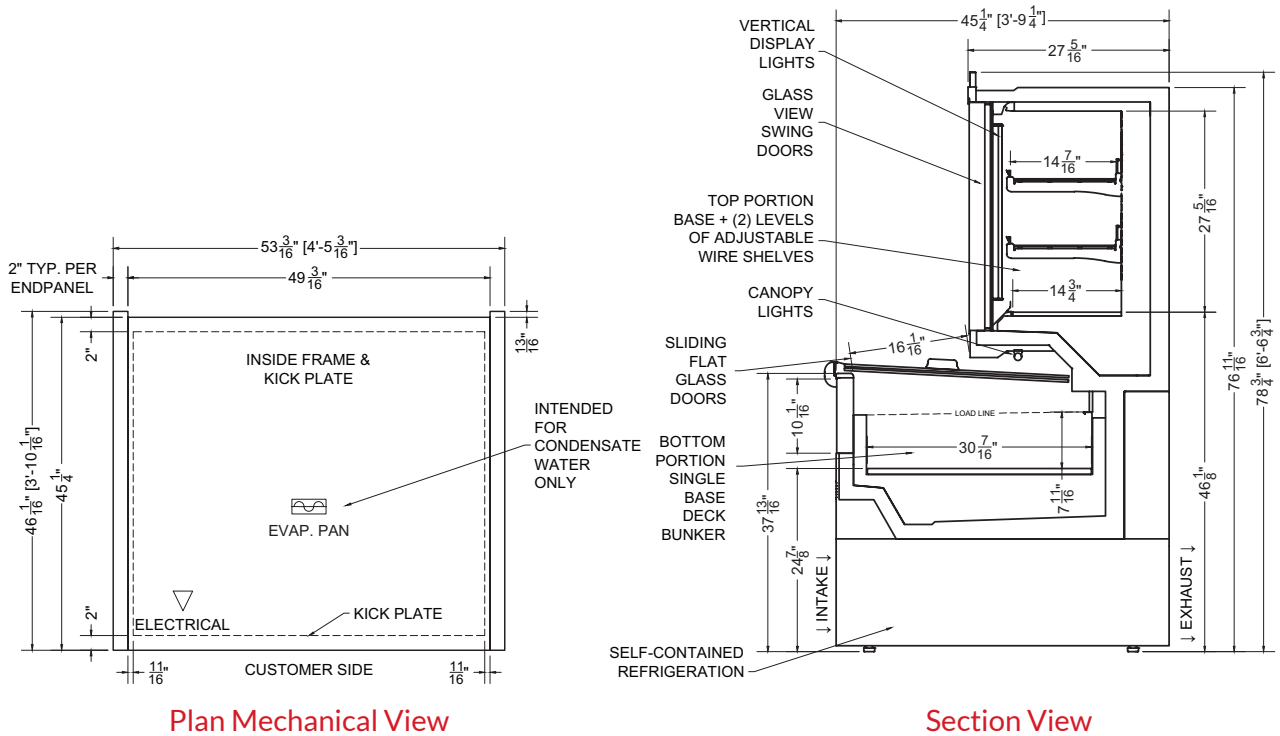


04.1-MDD-81TSCF-S | Mystic Combination Freezer

QTY	DESCRIPTION	PART NUMBER	VOLTAGE	PHASE	AMPS	TOTAL AMPS
4	22" LED 4000K, 24V	LG-FX-XXX-X	208-230V	1	0.32	1.28
1	45" LED 4000K, 24V	LG-FX-XXX-X	208-230V	1	0.50	0.50
4	EVAPORATOR FAN	AFXXX	208-230V	1	0.10	0.40
1	TOP DEFROST HEATERS	---	208-230V	1	3.68	3.68
1	BOTTOM DEFROST HEATERS	---	208-230V	1	5.77	5.77
1	TOP COMPRESSOR	---	208-230V	1	2.73	2.73
1	BOTTOM COMPRESSOR	---	208-230V	1	2.70	2.70
4	CONDENSER COIL FAN MOTOR	---	208-230V	1	0.10	0.40
1	EVAP PAN	---	208-230V	1	3.18	3.18

\*NOT INCLUDED IN TOTAL  
\*NOT INCLUDED IN TOTAL

CIRCUIT#1 TOTAL AMPS: 15.21\* VOLTAGE: 208-230/1/60 CONNECTION: HARDWIRED  
 \* NOT ALL ELECTRICAL COMPONENTS RUN CONCURRENTLY (COMPRESSORS WILL NOT RUN DURING DEFROST)  
 MODEL: MDD-81TSCF APPLICATION: FROZEN BTUH: 4214 EVAP TEMP: -31°F  
 DEFROST: TIME-OFF, 4/45MIN, 50° TEMP TERMINATION TOP PACKOUT VOLUME: 11.94 CUBIC FT.  
 \* R290 (PROPANE) REFRIGERATION AVAILABLE TOP INTERNAL VOLUME: 13.64 CUBIC FT.  
 BOTTOM PACKOUT VOLUME: 6.55 CUBIC FT.  
 BOTTOM INTERNAL VOLUME: 10.91 CUBIC FT.



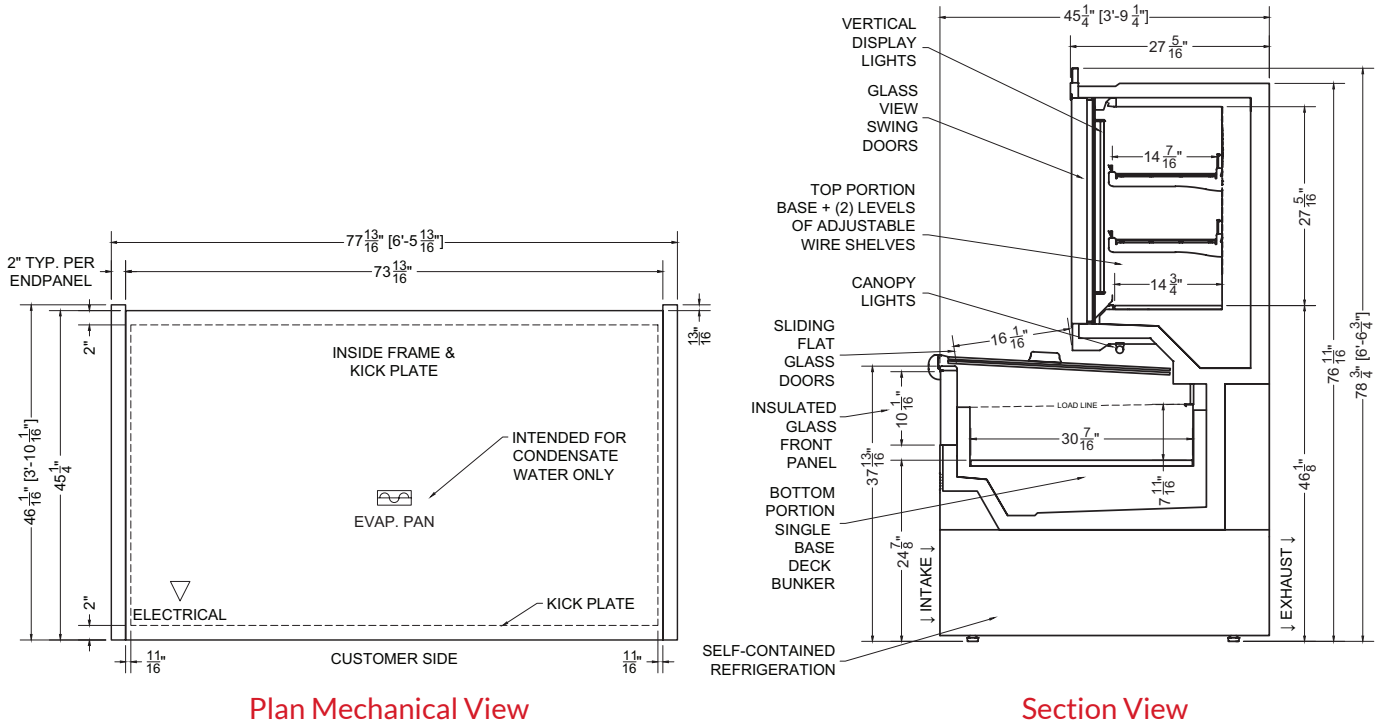


06.2-MDD-81TSCF-S | Mystic Combination Freezer

QTY	DESCRIPTION	PART NUMBER	VOLTAGE	PHASE	AMPS	TOTAL AMPS
6	22" LED 4000K, 24V	LG-FX-XXX-X	208-230V	1	0.32	1.93
2	33" LED 4000K, 24V	LG-FX-XXX-X	208-230V	1	0.38	0.75
6	EVAPORATOR FAN	AFXXX	208-230V	1	0.10	0.60
1	TOP DEFROST HEATERS	---	208-230V	1	5.52	5.52
1	BOTTOM DEFROST HEATERS	---	208-230V	1	8.66	8.66
2	TOP COMPRESSOR	---	208-230V	1	2.70	5.40
2	BOTTOM COMPRESSOR	---	208-230V	1	2.53	5.06
8	CONDENSER COIL FAN MOTOR	---	208-230V	1	0.10	0.80
1	EVAP PAN	---	208-230V	1	5.00	5.00

\*NOT INCLUDED IN TOTAL  
\*NOT INCLUDED IN TOTAL

CIRCUIT#1 TOTAL AMPS: 23.26\* VOLTAGE: 208-230/1/60 CONNECTION: HARDWIRED  
 \* NOT ALL ELECTRICAL COMPONENTS RUN CONCURRENTLY (COMPRESSORS WILL NOT RUN DURING DEFROST)  
 MODEL: MDD-81TSCF APPLICATION: FROZEN BTUH: 7738 EVAP TEMP: -31°F  
 DEFROST: TIME-OFF, 4/45MIN, 50° TEMP TERMINATION TOP PACKOUT VOLUME: 17.91 CUBIC FT.  
 \* R290 (PROPANE) REFRIGERATION AVAILABLE TOP INTERNAL VOLUME: 20.47 CUBIC FT.  
 BOTTOM PACKOUT VOLUME: 9.83 CUBIC FT.  
 BOTTOM INTERNAL VOLUME: 16.37 CUBIC FT.



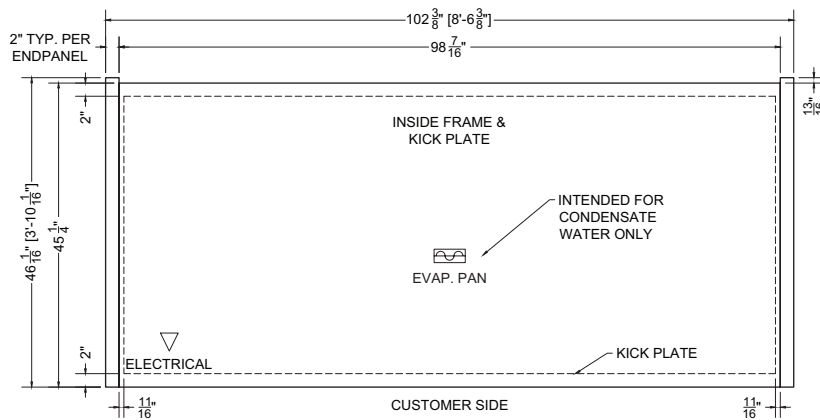


## 08.2-MDD-81TSCF-S | Mystic Combination Freezer

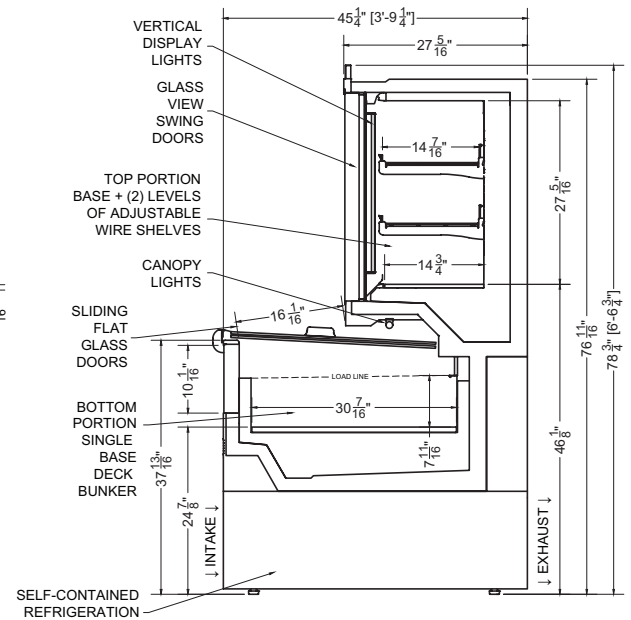
QTY	DESCRIPTION	PART NUMBER	VOLTAGE	PHASE	AMPS	TOTAL AMPS
8	22" LED 4000K, 24V	LG-FX-XXX-X	208-230V	1	0.32	2.57
2	45" LED 4000K, 24V	LG-FX-XXX-X	208-230V	1	0.50	1.00
9	EVAPORATOR FAN	AFXXX	208-230V	1	0.10	0.90
1	TOP DEFROST HEATERS	---	208-230V	1	7.36	7.36
1	BOTTOM DEFROST HEATERS	---	208-230V	1	11.55	11.55
2	TOP COMPRESSOR	---	208-230V	1	2.73	5.46
2	BOTTOM COMPRESSOR	---	208-230V	1	2.70	5.40
4	CONDENSER COIL FAN MOTOR	---	208-230V	1	0.10	0.40
1	EVAP PAN	---	208-230V	1	5.00	5.00

\*NOT INCLUDED IN TOTAL  
\*NOT INCLUDED IN TOTAL

CIRCUIT#1 TOTAL AMPS: 28.78\* VOLTAGE: 208-230/1/60 CONNECTION: HARDWIRED  
 \*NOT ALL ELECTRICAL COMPONENTS RUN CONCURRENTLY (COMPRESSORS WILL NOT RUN DURING DEFROST)  
 MODEL: MDD-81TSCF APPLICATION: FROZEN BTUH: 8428 EVAP TEMP: -31°F  
 DEFROST: TIME-OFF, 4/45MIN, 50° TEMP TERMINATION TOP PACKOUT VOLUME: 23.87 CUBIC FT.  
 \* R290 (PROPANE) REFRIGERATION AVAILABLE TOP INTERNAL VOLUME: 27.29 CUBIC FT.  
 BOTTOM PACKOUT VOLUME: 13.10 CUBIC FT.  
 BOTTOM INTERNAL VOLUME: 21.83 CUBIC FT.



Plan Mechanical View



Section View

For more information on the Mystic Combination Freezer, contact one of our **Southern CaseArts** representatives or check out our website to learn more about all of the products offered by **Southern CaseArts**.