



Potomac
Multideck Merchandiser | Cold
BCX-SS-R



southerncasearts.com | 800.552.6283



OVERVIEW



The **Potomac Multideck Merchandiser** from **Southern CaseArts** is the perfect addition to your store. Available in four lengths with 3 adjustable glass shelves and LED lighting in the canopy along with on each shelf. The **Potomac** is a versatile case that can showcase meats, cheese, and bakery.

STANDARD FEATURES

- **Nominal Length:** 5.0', 6.0', 8.0' & 12.0'
- **Shelves:** 3 adjustable glass shelves with LED lights
- **Interior Lighting:** 3500K LED Lights
- Remote
- **Exterior:** Black powder coat

PRODUCT CATEGORIES



Meat



Deli



Cheese/
Dairy



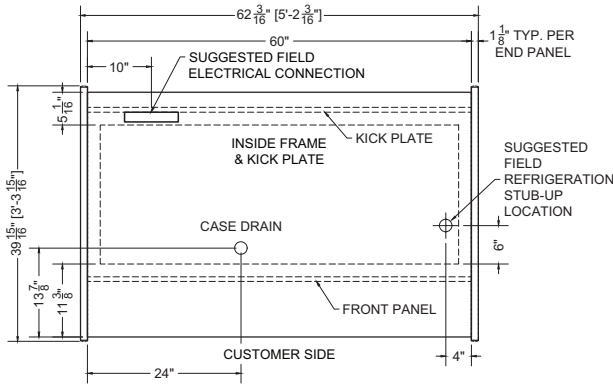
Bakery

05.0-BCX-SS-R | Potomac Multideck Merchandiser

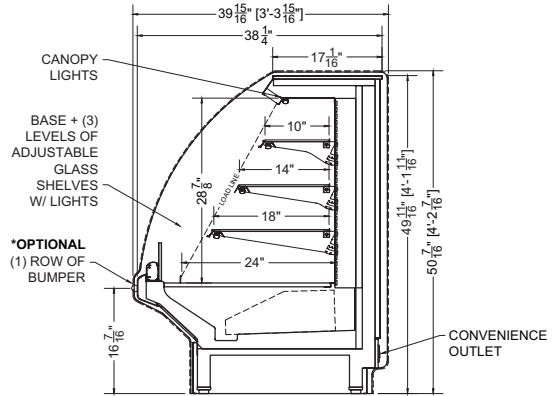
QTY	DESCRIPTION	PART NUMBER	VOLTAGE	PHASE	AMPS	TOTAL AMPS
4	56" LED 3500K, FROSTED, 24V	LG-FX-XXX-X	115V	1	0.11	0.44
2	EVAPORATOR FAN	RF-FA-XXXX	115V	1	0.17	0.34

CIRCUIT#1 (LIGHTS) **TOTAL AMPS:** 0.44 **VOLTAGE:** 115/1/60 **CONNECTION:** HARDWIRED
 CIRCUIT#2 (FANS) **TOTAL AMPS:** 0.34 **VOLTAGE:** 115/1/60 **CONNECTION:** HARDWIRED
 CIRCUIT#2 (CONV. OUTLET) **TOTAL AMPS:** 20.00 **VOLTAGE:** 115/1/60 **CONNECTION:** HARDWIRED
MODEL: BCX-SS **APPLICATION:** Bakery/Pastry **BTUH:** 5000 **EVAP TEMP:** 22°F
DEFROST: TIME-OFF, 4/30MIN, 47° TEMP TERMINATION
SHIPPING DIMENSIONS: 72" X 48" X 60" **PACKOUT VOLUME:** 16.66 CUBIC FT.
WEIGHT: 900 LBS **INTERNAL VOLUME:** 21.21 CUBIC FT.





Plan Mechanical View



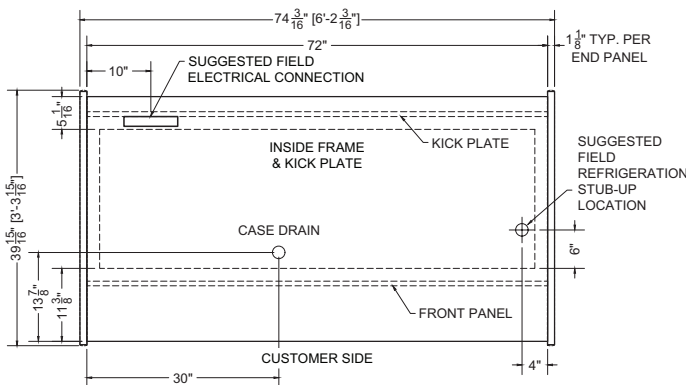
Section View

06.0-BCX-SS-R | Potomac Multideck Merchandiser

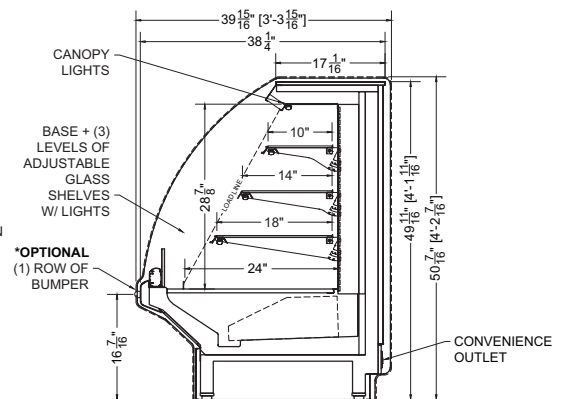
QTY	DESCRIPTION	PART NUMBER	VOLTAGE	PHASE	AMPS	TOTAL AMPS
8	34" LED 3500K, FROSTED, 24V	LG-FX-XXX-X	115V	1	0.07	0.56
3	EVAPORATOR FAN	RF-FA-XXXX	115V	1	0.17	0.51

CIRCUIT#1 (LIGHTS) TOTAL AMPS: 0.56 VOLTAGE: 115/1/60 CONNECTION: HARDWIRED
 CIRCUIT#2 (FANS) TOTAL AMPS: 0.51 VOLTAGE: 115/1/60 CONNECTION: HARDWIRED
 CIRCUIT#2 (CONV. OUTLET) TOTAL AMPS: 20.00 VOLTAGE: 115/1/60 CONNECTION: HARDWIRED
 MODEL: BCX-SS APPLICATION: Bakery/Pastry BTUH: 6000 EVAP TEMP: 22°F
 DEFROST: TIME-OFF, 4/30MIN, 47° TEMP TERMINATION
 SHIPPING DIMENSIONS: 84" X 48" X 60"
 WEIGHT: 1008 LBS

PACKOUT VOLUME: 19.99 CUBIC FT.
 INTERNAL VOLUME: 25.45 CUBIC FT.



Plan Mechanical View



Section View

08.0-BCX-SS-R | Potomac Multideck Merchandiser

QTY	DESCRIPTION	PART NUMBER	VOLTAGE	PHASE	AMPS	TOTAL AMPS
8	45" LED 3500K, FROSTED, 24V	LG-FX-XXX-X	115V	1	0.09	0.72
4	EVAPORATOR FAN	RF-FA-XXXX	115V	1	0.17	0.68

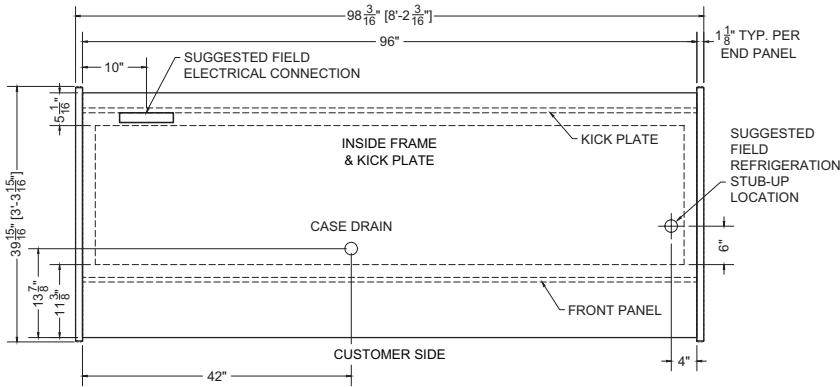
CIRCUIT#1 (LIGHTS) TOTAL AMPS: 0.72 VOLTAGE: 115/1/60 CONNECTION: HARDWIRED
 CIRCUIT#2 (FANS) TOTAL AMPS: 0.68 VOLTAGE: 115/1/60 CONNECTION: HARDWIRED
 CIRCUIT#2 (CONV. OUTLET) TOTAL AMPS: 20.00 VOLTAGE: 115/1/60 CONNECTION: HARDWIRED
 MODEL: BCX-SS APPLICATION: Bakery/Pastry BTUH: 8000 EVAP TEMP: 22°F
 DEFROST: TIME-OFF, 4/30MIN, 47° TEMP TERMINATION
 SHIPPING DIMENSIONS: 108" X 48" X 60"
 WEIGHT: 1220 LBS

PACKOUT VOLUME: 26.66 CUBIC FT.
 INTERNAL VOLUME: 33.94 CUBIC FT.

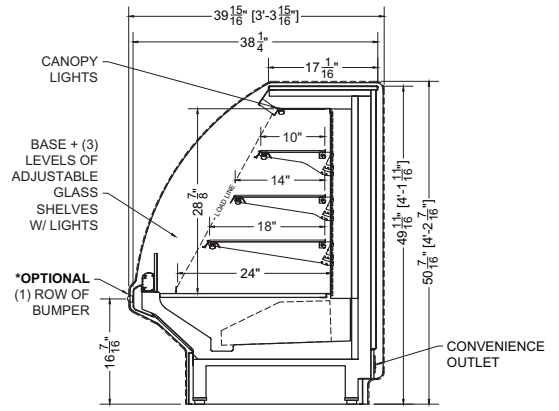


southerncasearts.com

© 2024 Southern CaseArts. All rights reserved. Information and specifications subject to change without notice. All values are design or typical values when measured under laboratory conditions.



Plan Mechanical View



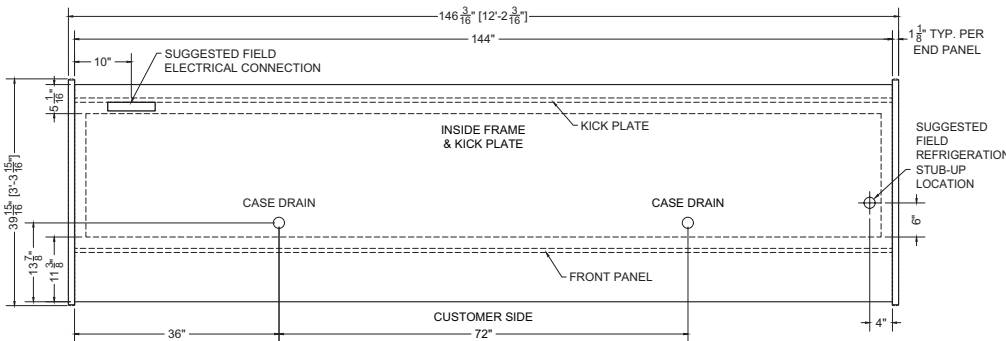
Section View

12.0-BCX-SS-R | Potomac Multideck Merchandiser

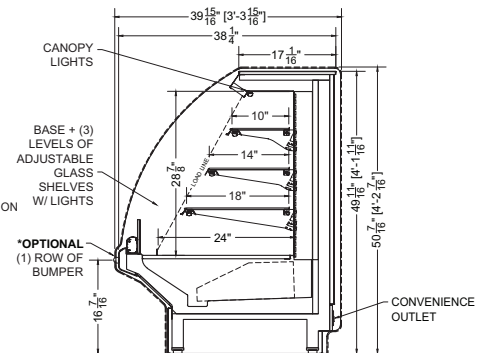
QTY	DESCRIPTION	PART NUMBER	VOLTAGE	PHASE	AMPS	TOTAL AMPS
12	45" LED 3500K, FROSTED, 24V	LG-FX-XXX-X	115V	1	1.08	1.35
5	EVAPORATOR FAN	RF-FA-XXXX	115V	1	0.17	0.85

CIRCUIT#1 (LIGHTS) TOTAL AMPS: 1.08 VOLTAGE: 115/1/60 CONNECTION: HARDWIRED
 CIRCUIT#2 (FANS) TOTAL AMPS: 0.85 VOLTAGE: 115/1/60 CONNECTION: HARDWIRED
 CIRCUIT#2 (CONV. OUTLET) TOTAL AMPS: 20.00 VOLTAGE: 115/1/60 CONNECTION: HARDWIRED
 MODEL: BCX-SS APPLICATION: Bakery/Pastry BTUH: 12000 EVAP TEMP: 22°F
 DEFROST: TIME-OFF, 4/30MIN, 47° TEMP TERMINATION
 SHIPPING DIMENSIONS: 156" X 48" X 60"
 WEIGHT: 1645 LBS

PACKOUT VOLUME: 39.99 CUBIC FT.
 INTERNAL VOLUME: 50.91 CUBIC FT.



Plan Mechanical View



Section View



CONFORMS TO UL STD 471.
 CONFORMS TO NSF STD 7.
 CERTIFIED TO CAN/CSA STD C22.2 NO. 120.

For more information on the Potomac Multideck Merchandiser, contact one of our Southern CaseArts representatives or check out our website to learn more about all of the products offered by Southern CaseArts.



southerncasearts.com

© 2024 Southern CaseArts. All rights reserved. Information and specifications subject to change without notice. All values are design or typical values when measured under laboratory conditions.