



**Canyon**  
**Open Display Merchandiser | Cold**  
**ODC-TS-R**



southerncasearts.com | 800.552.6283



**OVERVIEW**



The **Canyon Open Display Merchandiser** from **Southern CaseArts** is a true work horse for your store. This versatile single deck case is available in four lengths and provides maximum packout for anything from meats, cheese, produce, sandwiches, prepared foods to beverages.

The **Canyon** is a remote case featuring LED canopy lighting and is extremely energy efficient. You and your customers are going to love this merchandiser.

**STANDARD FEATURES**

- **Nominal Length:** 6.0', 8.0', 10.0' & 12.0'
- **Internal Lighting:** 3500K LED
- Remote
- **Exterior:** Black powder coat

**PRODUCT CATEGORIES**



Meat



Deli



Cheese/  
Dairy



Produce



Snacks/  
Sandwiches



Beverages



Prepared  
Food

**06.0-ODC-TS-R | Canyon Open Display Merchandiser**

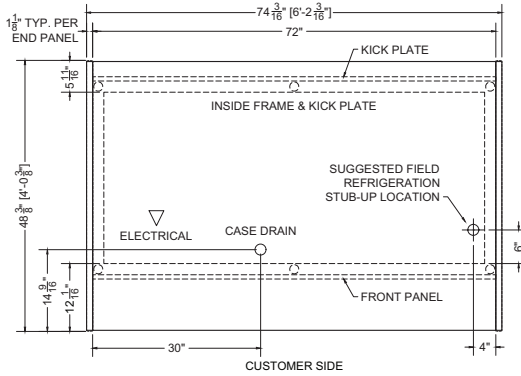
QTY	DESCRIPTION	PART NUMBER	VOLTAGE	PHASE	AMPS	TOTAL AMPS
4	34" LED 3500K, FROSTED, 24V	LG-FX-XXX-X	115V	1	0.07	0.28
3	EVAPORATOR FAN	RF-FA-XXXX	115V	1	0.17	0.51

CIRCUIT#1 (LIGHTS) **TOTAL AMPS:** 0.28 **VOLTAGE:** 115/1/60 **CONNECTION:** HARDWIRED  
 CIRCUIT#2 (FANS) **TOTAL AMPS:** 0.51 **VOLTAGE:** 115/1/60 **CONNECTION:** HARDWIRED  
 MODEL: ODC-TS **APPLICATION:** DELI **BTUH:** 3150 **EVAP TEMP:** 24°F  
**DEFROST:** TIME-OFF, 4/40 MIN, 47° TEMP TERMINATION

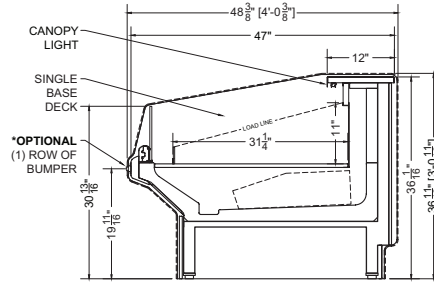
\* OPTIONAL COMPONENT LOAD INCLUDED

**PACKOUT VOLUME:** 9.21 CUBIC FT.  
**INTERNAL VOLUME:** 17.73 CUBIC FT.





Plan Mechanical View



Section View

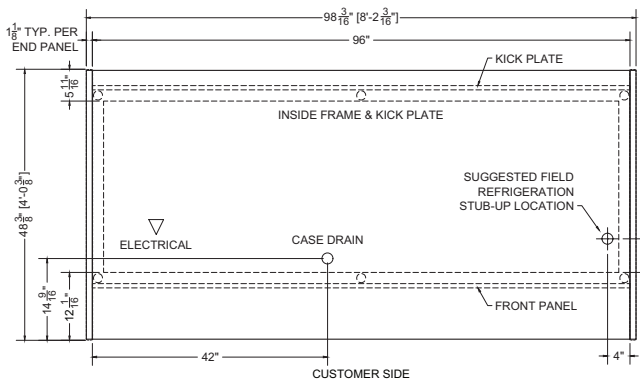
08.0-ODC-TS-R | Canyon Open Display Merchandiser

QTY	DESCRIPTION	PART NUMBER	VOLTAGE	PHASE	AMPS	TOTAL AMPS
4	45" LED 3500K, FROSTED, 24V	LG-FX-XXX-X	115V	1	0.09	0.36
4	EVAPORATOR FAN	RF-FA-XXXX	115V	1	0.17	0.68

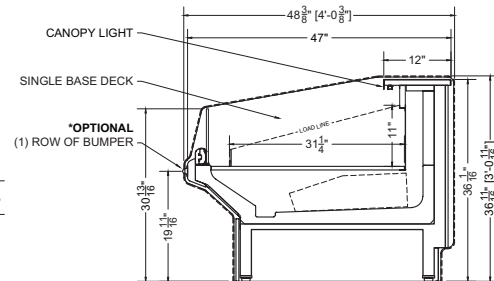
CIRCUIT#1 (LIGHTS) TOTAL AMPS: 0.36 VOLTAGE: 115/1/60 CONNECTION: HARDWIRED  
 CIRCUIT#2 (FANS) TOTAL AMPS: 0.68 VOLTAGE: 115/1/60 CONNECTION: HARDWIRED  
 MODEL: ODC-TS APPLICATION: DELI BTUH: 6600 EVAP TEMP: 24°F  
 DEFROST: TIME-OFF, 4/40 MIN, 47° TEMP TERMINATION

PACKOUT VOLUME: 12.28 CUBIC FT.  
 INTERNAL VOLUME: 23.64 CUBIC FT.

\* OPTIONAL COMPONENT LOAD INCLUDED



Plan Mechanical View



Section View

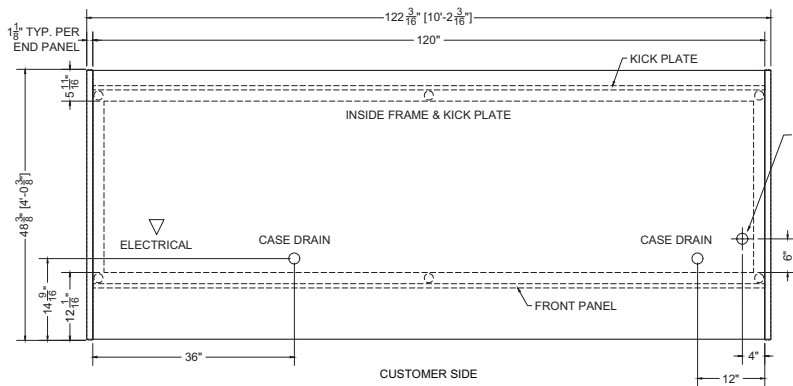
10.0-ODC-TS-R | Canyon Open Display Merchandiser

QTY	DESCRIPTION	PART NUMBER	VOLTAGE	PHASE	AMPS	TOTAL AMPS
4	56" LED 3500K, FROSTED, 24V	LG-FX-XXX-X	115V	1	0.11	0.44
5	EVAPORATOR FAN	RF-FA-XXXX	115V	1	0.17	0.85

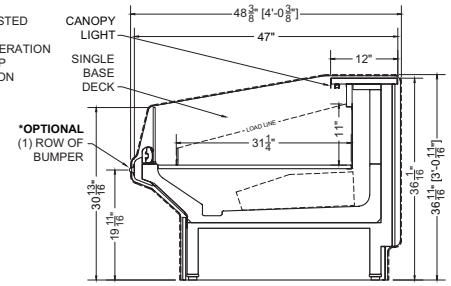
CIRCUIT#1 (LIGHTS) TOTAL AMPS: 0.44 VOLTAGE: 115/1/60 CONNECTION: HARDWIRED  
 CIRCUIT#2 (FANS) TOTAL AMPS: 0.85 VOLTAGE: 115/1/60 CONNECTION: HARDWIRED  
 MODEL: ODC-TS APPLICATION: DELI BTUH: 8520 EVAP TEMP: 24°F  
 DEFROST: TIME-OFF, 4/40 MIN, 47° TEMP TERMINATION

PACKOUT VOLUME: 15.34 CUBIC FT.  
 INTERNAL VOLUME: 29.56 CUBIC FT.

\* OPTIONAL COMPONENT LOAD INCLUDED



Plan Mechanical View



Section View

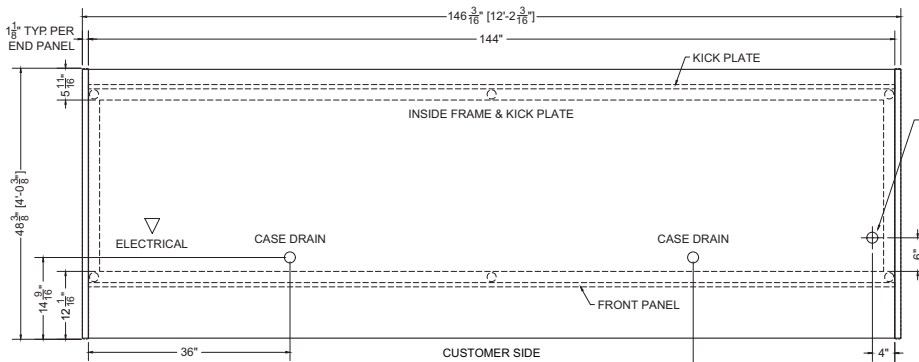
12.0-ODC-TS-R | Canyon Open Display Merchandiser

QTY	DESCRIPTION	PART NUMBER	VOLTAGE	PHASE	AMPS	TOTAL AMPS
6	45" LED 3500K, FROSTED, 24V	LG-FX-XXX-X	115V	1	0.09	0.54
6	EVAPORATOR FAN	RF-FA-XXXX	115V	1	0.17	1.02

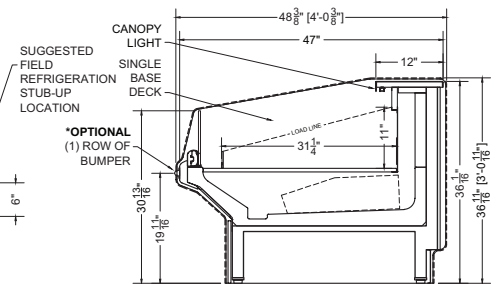
CIRCUIT#1 (LIGHTS) TOTAL AMPS: 0.54 VOLTAGE:115/1/60 CONNECTION: HARDWIRED  
 CIRCUIT#2 (FANS) TOTAL AMPS: 1.02 VOLTAGE:115/1/60 CONNECTION: HARDWIRED  
 MODEL: ODC-TS APPLICATION: DELI BTUH: 9901 EVAP TEMP: 24°F  
 DEFOUST: TIME-OFF, 4/40 MIN, 47° TEMP TERMINATION

PACKOUT VOLUME: 18.41 CUBIC FT.  
 INTERNAL VOLUME: 35.47 CUBIC FT.

\* OPTIONAL COMPONENT LOAD INCLUDED



Plan Mechanical View



Section View



CONFORMS TO UL STD 471.  
 CONFORMS TO NSF STD 7.  
 CERTIFIED TO CAN/CSA STD C22.2 NO. 120.

For more information on the Canyon Open Display Merchandiser, contact one of our Southern CaseArts representatives or check out our website to learn more about all of the products offered by Southern CaseArts.



southerncasearts.com

© 2024 Southern CaseArts. All rights reserved. Information and specifications subject to change without notice. All values are design or typical values when measured under laboratory conditions.