



**Pine**  
**Island Merchandiser | Cold**  
**SAR-36ASM-S & SAR-36ANM-S**



southerncasearts.com | 800.552.6283



**OVERVIEW**



The **Pine Island Merchandiser** from **Southern CaseArts** will surely capture the attention of your customers. Designed with full glass walls, this self-contained case provides both maximum visibility but also maximum packout for cheese, deli items, and produce. The **Pine** is offered in two lengths and available with R290 refrigerant for enhanced energy efficiency.

**STANDARD FEATURES**

- **Nominal Length:** 3.3' & 4.1'
- Optional R290 Refrigerant
- **Exterior:** Glass side walls with black powder coat base

**PRODUCT CATEGORIES**



Deli



Cheese/  
Dairy



Produce

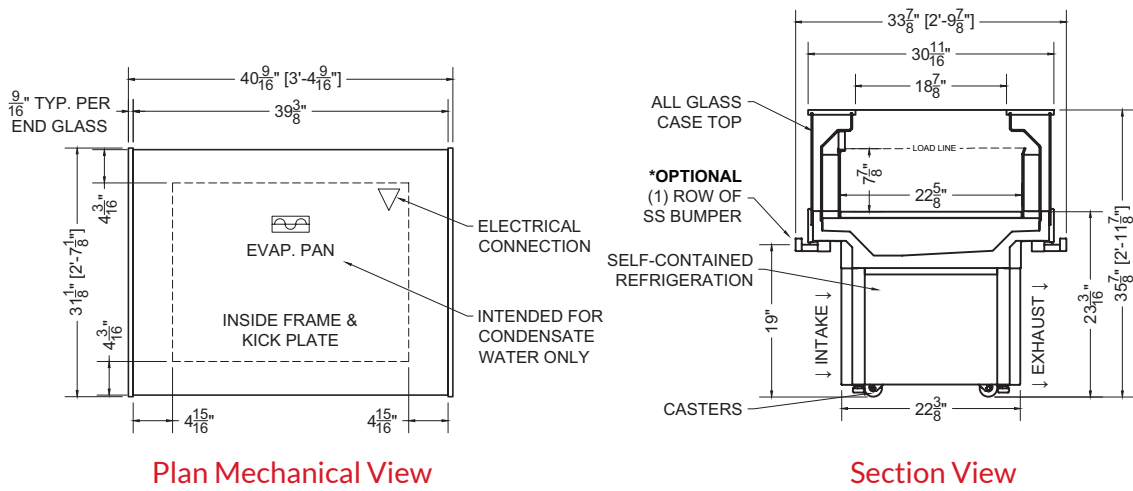
**03.3-SAR-36ANM-S | Pine Island Merchandiser**

QTY	DESCRIPTION	PART NUMBER	VOLTAGE	PHASE	AMPS	TOTAL AMPS
2	EVAPORATOR FAN	AFXXX	115V	1	0.08	0.16
1	COMPRESSOR	---	115V	1	5.56	5.56
1	CONDENSER COIL FAN MOTOR	---	115V	1	0.20	0.20
1	EVAP PAN	---	115V	1	3.48	3.48

CIRCUIT#1      TOTAL AMPS: 9.40      VOLTAGE: 115/1/60      CONNECTION: 5-15P  
 MODEL: SAR-36ANM      APPLICATION: DELI      BTUH: 3497      EVAP TEMP: 14°F  
 DEFROST: TIME-OFF, 4/45MIN, 50° TEMP TERMINATION  
 \* R290 (PROPANE) REFRIGERATION AVAILABLE

PACKOUT VOLUME: 4.09 CUBIC FT.  
INTERNAL VOLUME: 6.37 CUBIC FT.





Plan Mechanical View

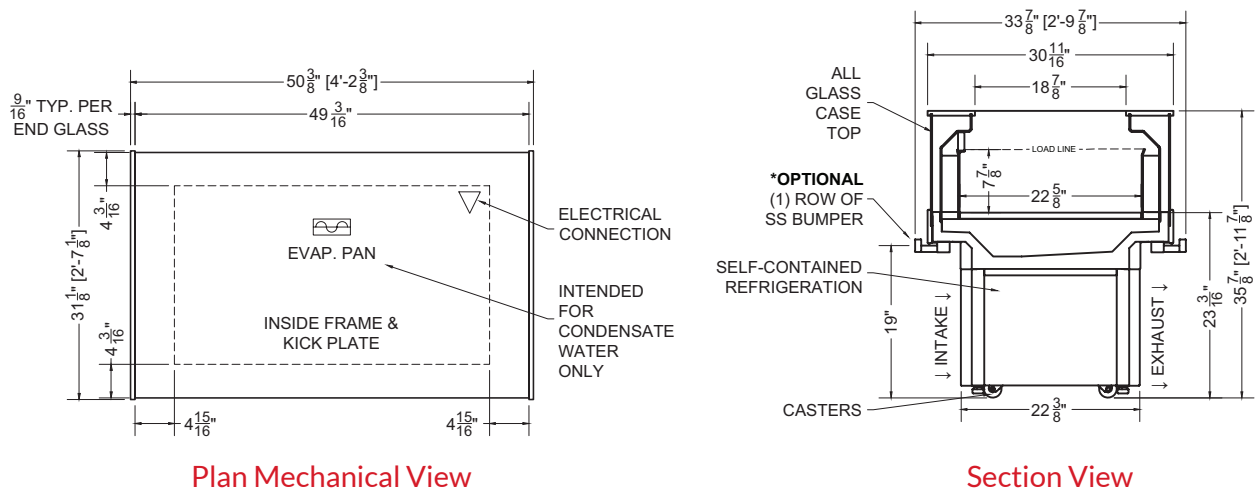
Section View

04.1-SAR-36ANM-S | Pine Island Merchandiser

QTY	DESCRIPTION	PART NUMBER	VOLTAGE	PHASE	AMPS	TOTAL AMPS
2	EVAPORATOR FAN	AFXXX	115V	1	0.08	0.16
1	COMPRESSOR	---	115V	1	4.68	4.68
1	CONDENSER COIL FAN MOTOR	---	115V	1	0.20	0.20
1	EVAP PAN	---	115V	1	3.48	3.48

CIRCUIT#1      TOTAL AMPS: 8.52      VOLTAGE: 115/1/60      CONNECTION: 5-15P  
 MODEL: SAR-36ANM      APPLICATION: DELI      BTUH: 3849      EVAP TEMP: 14°F  
 DEFROST: TIME-OFF, 4/45MIN, 50° TEMP TERMINATION  
 \* R290 (PROPANE) REFRIGERATION AVAILABLE

PACKOUT VOLUME: 5.12 CUBIC FT.  
 INTERNAL VOLUME: 7.96 CUBIC FT.



Plan Mechanical View

Section View

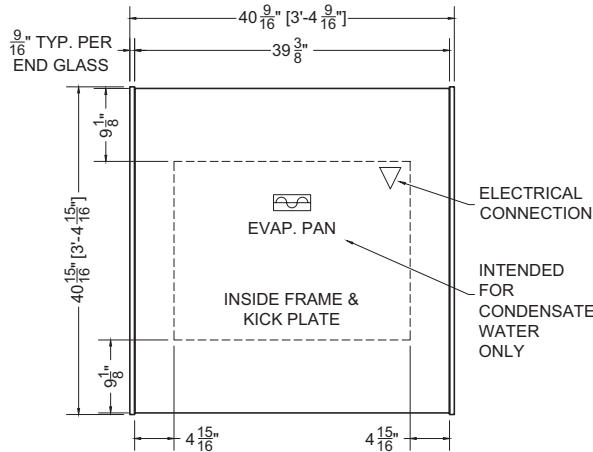


### 03.3-SAR-36ASM-S | Pine Island Merchandiser

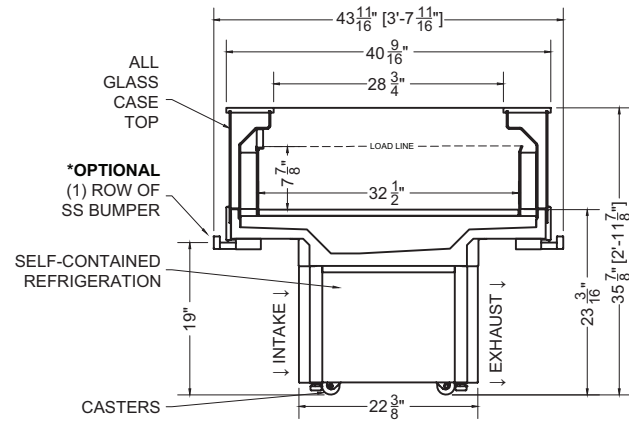
QTY	DESCRIPTION	PART NUMBER	VOLTAGE	PHASE	AMPS	TOTAL AMPS
2	EVAPORATOR FAN	AFXXX	115V	1	0.08	0.16
1	COMPRESSOR	---	115V	1	5.56	5.56
1	CONDENSER COIL FAN MOTOR	---	115V	1	0.20	0.20
1	EVAP PAN	---	115V	1	3.48	3.48

CIRCUIT#1      **TOTAL AMPS: 9.40**      **VOLTAGE: 115/1/60**      **CONNECTION: 5-15P**  
**MODEL: SAR-36ASM**      **APPLICATION: DELI**      **BTUH: 3497**      **EVAP TEMP: 14°F**  
**DEFROST: TIME-OFF, 4/45MIN, 50° TEMP TERMINATION**  
 \* R290 (PROPANE) REFRIGERATION AVAILABLE

**PACKOUT VOLUME: 5.87 CUBIC FT.**  
**INTERNAL VOLUME: 9.22 CUBIC FT.**



Plan Mechanical View



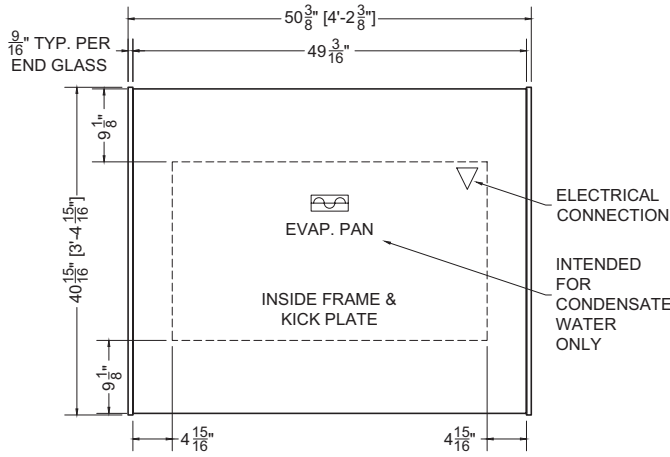
Section View

### 04.1-SAR-36ASM-S | Pine Island Merchandiser

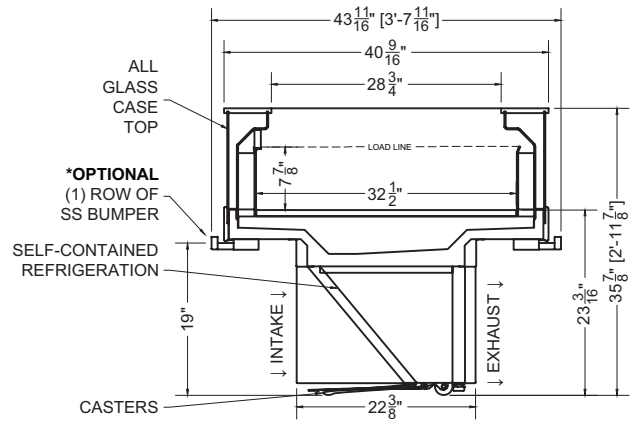
QTY	DESCRIPTION	PART NUMBER	VOLTAGE	PHASE	AMPS	TOTAL AMPS
2	EVAPORATOR FAN	AFXXX	115V	1	0.08	0.16
1	COMPRESSOR	---	115V	1	4.68	4.68
1	CONDENSER COIL FAN MOTOR	---	115V	1	0.20	0.20
1	EVAP PAN	---	115V	1	3.48	3.48

CIRCUIT#1      **TOTAL AMPS: 8.52**      **VOLTAGE: 115/1/60**      **CONNECTION: 5-15P**  
**MODEL: SAR-36ASM**      **APPLICATION: DELI**      **BTUH: 3849**      **EVAP TEMP: 14°F**  
**DEFROST: TIME-OFF, 4/45MIN, 50° TEMP TERMINATION**  
 \* R290 (PROPANE) REFRIGERATION AVAILABLE

**PACKOUT VOLUME: 7.33 CUBIC FT.**  
**INTERNAL VOLUME: 11.52 CUBIC FT.**



Plan Mechanical View



Section View

For more information on this Pine Island Merchandiser, contact one of our **Southern CaseArts** representatives or check out our website to learn more about all of the products offered by **Southern CaseArts**.