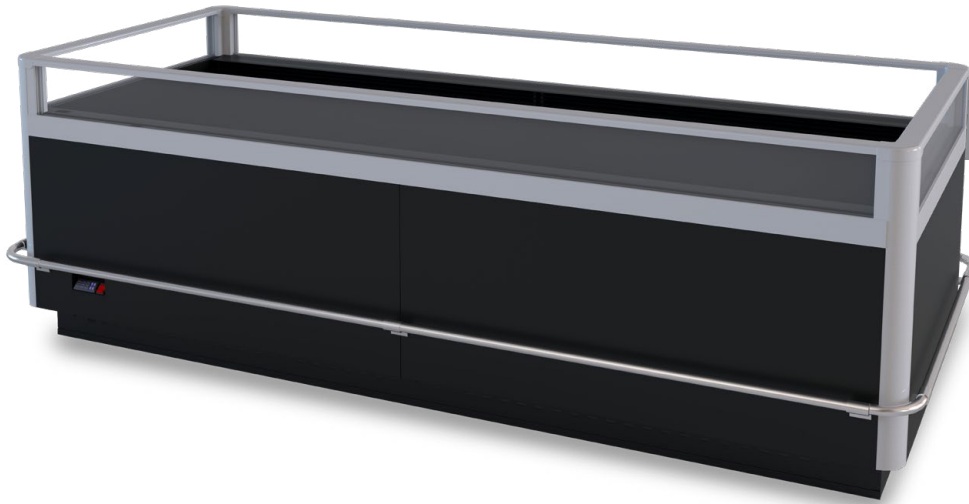




Sierra
Single Deck Dual-Temp Merchandiser | Cold & Frozen
SAR-35TSDO-R



southerncasearts.com | 800.552.6283



OVERVIEW

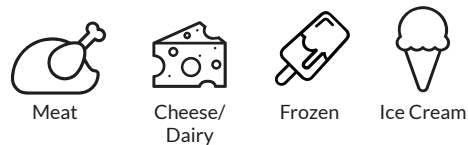


The **Sierra Single Deck Dual-Temp Merchandiser** from **Southern CaseArts** is a versatile case that provides a perfect way to showcase meats, cheese/dairy, frozen foods and ice cream. Available in three lengths, this energy efficient case features wrap-around glass panels providing customers with excellent views of product.

STANDARD FEATURES

- **Nominal Length:** 6.2', 8.2' & 12.3'
- Remote
- **Exterior:** Black powder coat with wrap-around glass panels

PRODUCT CATEGORIES

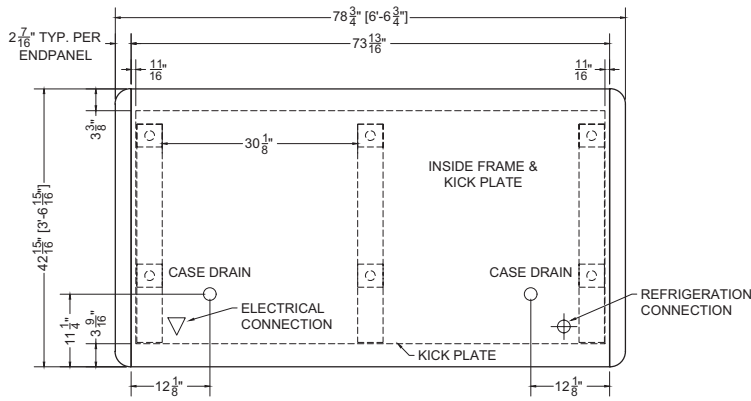


06.2-SAR-35TSDO-R | Sierra Single Deck Dual-Temp Merchandiser

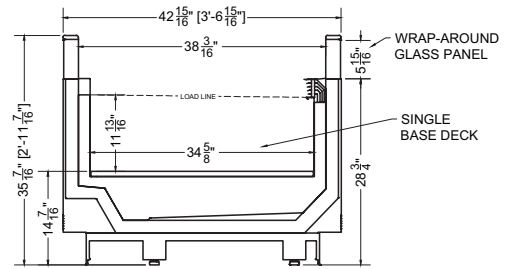
QTY	DESCRIPTION	PART NUMBER	VOLTAGE	PHASE	AMPS	TOTAL AMPS
2	EVAPORATOR FAN	AFXXX	208-230V	1	0.10	0.20
2	DRAIN HEATERS	---	208-230V	1	0.75	1.50
2	ANTI-COND. HEATERS (SIDE)	---	208-230V	1	0.20	0.40
2	ANTI-COND. HEATERS (FRONT & REAR)	---	208-230V	1	0.40	0.80
3	DEFROST HEATERS	---	208-230V	1	2.39	7.16

CIRCUIT#1 (FANS) **TOTAL AMPS:** 0.20 **VOLTAGE:** 208-230/1/60 **CONNECTION:** HARDWIRED
 CIRCUIT#2 (ANTI-COND.) **TOTAL AMPS:** 2.70 **VOLTAGE:** 208-230/1/60 **CONNECTION:** HARDWIRED
 CIRCUIT#3 (DEFROST) **TOTAL AMPS:** 7.16 **VOLTAGE:** 208-230/1/60 **CONNECTION:** HARDWIRED
MODEL: SAR-35TSDO **APPLICATION:** DUAL **BTUH:** 2879/4030 **EVAP TEMP:** -31/14°F
DEFROST: TIME-OFF, 4/45MIN, 50° TEMP TERMINATION **PACKOUT VOLUME:** 18.26 CUBIC FT.
 * R290 (PROPANE) REFRIGERATION AVAILABLE **INTERNAL VOLUME:** 32.57 CUBIC FT.





Plan Mechanical View

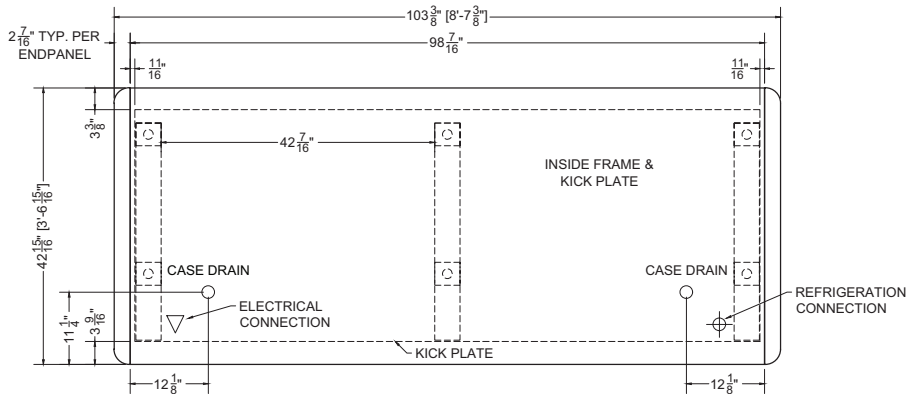


Section View

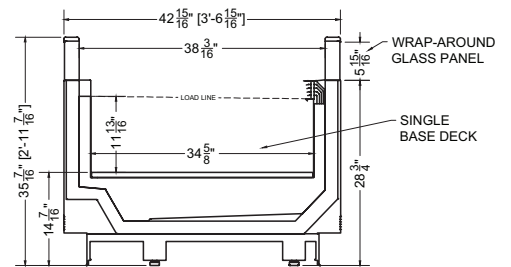
08.2-SAR-35TSDO-R | Sierra Single Deck Dual-Temp Merchandiser

QTY	DESCRIPTION	PART NUMBER	VOLTAGE	PHASE	AMPS	TOTAL AMPS
2	EVAPORATOR FAN	AFXXX	208-230V	1	0.10	0.20
2	DRAIN HEATERS	---	208-230V	1	1.00	2.00
2	ANTI-COND. HEATERS (SIDE)	---	208-230V	1	0.20	0.40
2	ANTI-COND. HEATERS (FRONT & REAR)	---	208-230V	1	0.57	1.14
3	DEFROST HEATERS	---	208-230V	1	3.18	9.55

CIRCUIT#1 (FANS) **TOTAL AMPS:** 0.20 **VOLTAGE:** 208-230/1/60 **CONNECTION:** HARDWIRED
 CIRCUIT#2 (ANTI-COND.) **TOTAL AMPS:** 3.54 **VOLTAGE:** 208-230/1/60 **CONNECTION:** HARDWIRED
 CIRCUIT#3 (DEFROST) **TOTAL AMPS:** 9.55 **VOLTAGE:** 208-230/1/60 **CONNECTION:** HARDWIRED
MODEL: SAR-35TSDO **APPLICATION:** DUAL **BTUH:** 3839/5374 **EVAP TEMP:** -31/14°F
DEFROST: TIME-OFF, 4/45MIN, 50° TEMP TERMINATION **PACKOUT VOLUME:** 24.35 CUBIC FT.
 * R290 (PROPANE) REFRIGERATION AVAILABLE **INTERNAL VOLUME:** 43.43 CUBIC FT.



Plan Mechanical View



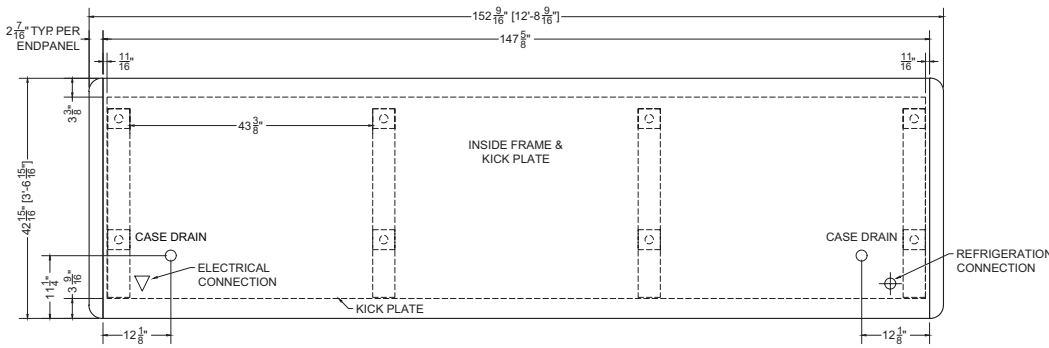
Section View



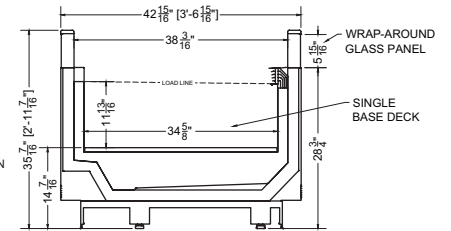
12.3-SAR-35TSDO-R | Sierra Single Deck Dual-Temp Merchandiser

QTY	DESCRIPTION	PART NUMBER	VOLTAGE	PHASE	AMPS	TOTAL AMPS
3	EVAPORATOR FAN	AFXXX	208-230V	1	0.10	0.30
2	DRAIN HEATERS	---	208-230V	1	1.50	3.00
2	ANTI-COND. HEATERS (SIDE)	---	208-230V	1	0.20	0.40
4	ANTI-COND. HEATERS (FRONT & REAR)	---	208-230V	1	0.48	1.91
3	DEFROST HEATERS	---	208-230V	1	4.77	14.32

CIRCUIT#1 (FANS) **TOTAL AMPS: 0.30** **VOLTAGE: 208-230/1/60** **CONNECTION: HARDWIRED**
 CIRCUIT#2 (ANTI-COND.) **TOTAL AMPS: 5.31** **VOLTAGE: 208-230/1/60** **CONNECTION: HARDWIRED**
 CIRCUIT#3 (DEFROST) **TOTAL AMPS: 14.32** **VOLTAGE: 208-230/1/60** **CONNECTION: HARDWIRED**
MODEL: SAR-35TSDO **APPLICATION: DUAL** **BTUH: 5758/8061** **EVAP TEMP: -31/14°F**
DEFROST: TIME-OFF, 4/45MIN, 50° TEMP TERMINATION **PACKOUT VOLUME: 36.52 CUBIC FT.**
*** R290 (PROPANE) REFRIGERATION AVAILABLE** **INTERNAL VOLUME: 65.14 CUBIC FT.**



Plan Mechanical View



Section View

For more information on the Sierra Single Deck Dual-Temp Merchandiser, contact one of our **Southern CaseArts** representatives or check out our website to learn more about all of the products offered by **Southern CaseArts**.