



# Chestnut Deli Combination Merchandiser | Cold CVT-BWD-R



southerncasearts.com | 800.552.6283

## OVERVIEW



The **Chestnut Deli Combination Merchandiser** from **Southern CaseArts** is sure to become a reliable favorite in your store. Available in two lengths, this case provides energy efficiency and maximum merchandising opportunities. The **Chestnut** features LED canopy lighting, full view tempered glass, and reflective sliding rear doors. The front of the case offers a merchandise area with an adjustable shelf, perfect for packaged deli salads. With options such as additional shelves and a scale stand ledge this case will keep customers and employees happy.



## STANDARD FEATURES

- **Nominal Length:** 8.0' & 12.0'
- **Interior Lighting:** 3500K LED lights
- **Shelving:** Adjustable with LED lights
- Remote
- **Exterior:** Tempered glass, black powder coat and stainless steel

## PRODUCT CATEGORIES



Meat



Deli



Cheese/  
Dairy



Snacks/  
Sandwiches



Beverages



Prepared  
Food



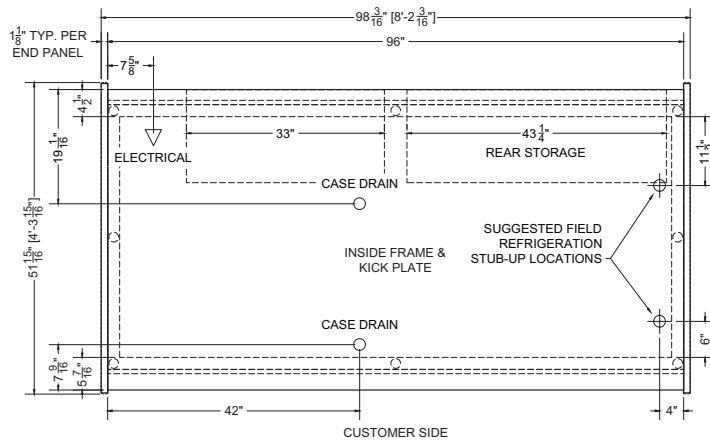


### 08.0-CVT-BWD-R | Chestnut Deli Combination Merchandiser

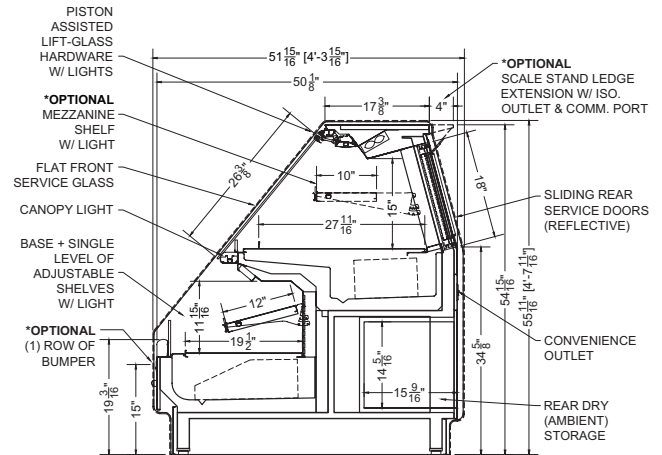
QTY	DESCRIPTION	PART NUMBER	VOLTAGE	PHASE	AMPS	TOTAL AMPS
8	45" LED 3500K, FROSTED, 24V	LG-FX-XXX-X	115V	1	0.09	0.72
4	EVAPORATOR FAN	RF-FA-XXXX	115V	1	0.17	0.68
5	EVAPORATOR FAN	AFXXX	115V	1	0.24	1.20
2	AIR SWEEP FAN	AFXXX	115V	1	0.24	0.48

CIRCUIT#1 (LIGHTS) **TOTAL AMPS: 0.90** **VOLTAGE: 115/1/60** **CONNECTION: HARDWIRED**  
 CIRCUIT#2 (FANS) **TOTAL AMPS: 2.36** **VOLTAGE: 115/1/60** **CONNECTION: HARDWIRED**  
 CIRCUIT#3 (CONV. OUTLET) **TOTAL AMPS: 20.00** **VOLTAGE: 115/1/60** **CONNECTION: HARDWIRED**  
 CIRCUIT#4 (ISO. OUTLET) **TOTAL AMPS: 20.00** **VOLTAGE: 115/1/60** **CONNECTION: HARDWIRED**  
**MODEL: CVT-BWD (DOME)** **APPLICATION: DELI** **BTUH: 2800** **EVAP TEMP: 22°F**  
**DEFROST: TIME-OFF, 4/40 MIN, 47° TEMP TERMINATION**  
**MODEL: CVT-BWD (BASE)** **APPLICATION: DELI** **BTUH: 4000** **EVAP TEMP: 24°F**  
**DEFROST: TIME-OFF, 4/40 MIN, 47° TEMP TERMINATION**  
 \* OPTIONAL COMPONENT LOAD INCLUDED

**TOP PACKOUT VOLUME: 16.41 CUBIC FT.**  
**BOTTOM PACKOUT VOLUME: 9.56 CUBIC FT.**  
**TOP INTERNAL VOLUME: 25.26 CUBIC FT.**  
**BOTTOM INTERNAL VOLUME: 14.42 CUBIC FT.**  
**REAR STORAGE: 9.81 CUBIC FT.**



Plan Mechanical View



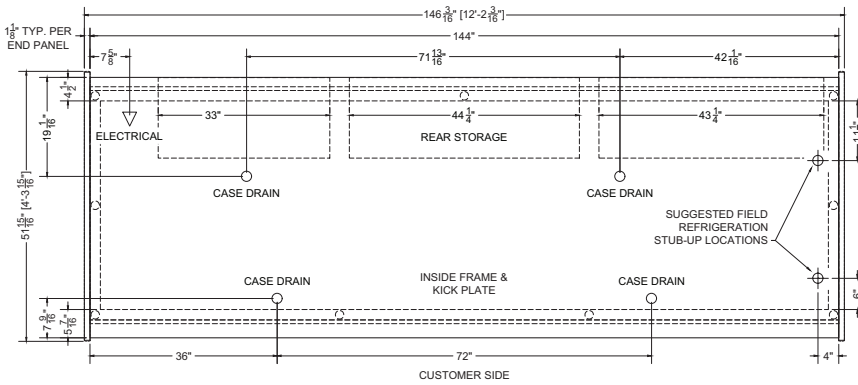
Section View

### 12.0-CVT-BWD-R | Chestnut Deli Combination Merchandiser

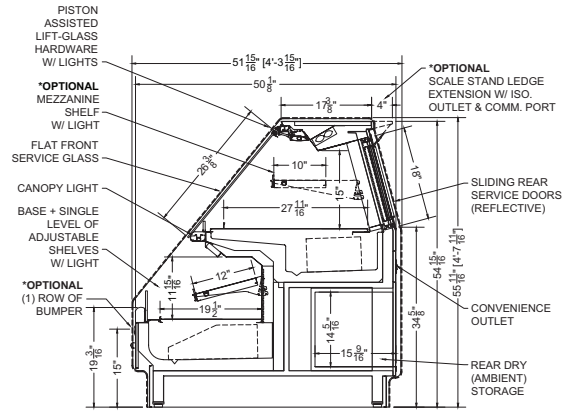
QTY	DESCRIPTION	PART NUMBER	VOLTAGE	PHASE	AMPS	TOTAL AMPS
12	45" LED 3500K, FROSTED, 24V	LG-FX-XXX-X	115V	1	0.09	1.35
5	EVAPORATOR FAN	RF-FA-XXXX	115V	1	0.17	0.85
8	EVAPORATOR FAN	AFXXX	115V	1	0.24	1.92
3	AIR SWEEP FAN	AFXXX	115V	1	0.24	0.72

CIRCUIT#1 (LIGHTS) **TOTAL AMPS: 1.35** **VOLTAGE: 115/1/60** **CONNECTION: HARDWIRED**  
 CIRCUIT#2 (FANS) **TOTAL AMPS: 3.49** **VOLTAGE: 115/1/60** **CONNECTION: HARDWIRED**  
 CIRCUIT#3 (CONV. OUTLET) **TOTAL AMPS: 20.00** **VOLTAGE: 115/1/60** **CONNECTION: HARDWIRED**  
 CIRCUIT#4 (ISO. OUTLET) **TOTAL AMPS: 20.00** **VOLTAGE: 115/1/60** **CONNECTION: HARDWIRED**  
**MODEL: CVT-BWD (DOME)** **APPLICATION: DELI** **BTUH: 4200** **EVAP TEMP: 22°F**  
**DEFROST: TIME-OFF, 4/40 MIN, 47° TEMP TERMINATION**  
**MODEL: CVT-BWD (BASE)** **APPLICATION: DELI** **BTUH: 6000** **EVAP TEMP: 24°F**  
**DEFROST: TIME-OFF, 4/40 MIN, 47° TEMP TERMINATION**  
 \* OPTIONAL COMPONENT LOAD INCLUDED

**TOP PACKOUT VOLUME: 24.62 CUBIC FT.**  
**BOTTOM PACKOUT VOLUME: 14.33 CUBIC FT.**  
**TOP INTERNAL VOLUME: 37.89 CUBIC FT.**  
**BOTTOM INTERNAL VOLUME: 21.62 CUBIC FT.**  
**REAR STORAGE: 15.50 CUBIC FT.**



Plan Mechanical View



Section View



CONFORMS TO UL STD 471.  
CONFORMS TO NSF STD 7.  
CERTIFIED TO CAN/CSA STD C22.2 NO. 120.

For more information on the Chestnut Deli Combination Merchandiser, contact one of our **Southern CaseArts** representatives or check out our website to learn more about all of the products offered by **Southern CaseArts**.



[southerncasearts.com](http://southerncasearts.com)

© 2024 Southern CaseArts. All rights reserved. Information and specifications subject to change without notice. All values are design or typical values when measured under laboratory conditions.